



Customer Sample ID: Mango Pineapple
 Laboratory Number: 20L0559-06
 Servings per Container: 3.879



Cannabinoid Profile

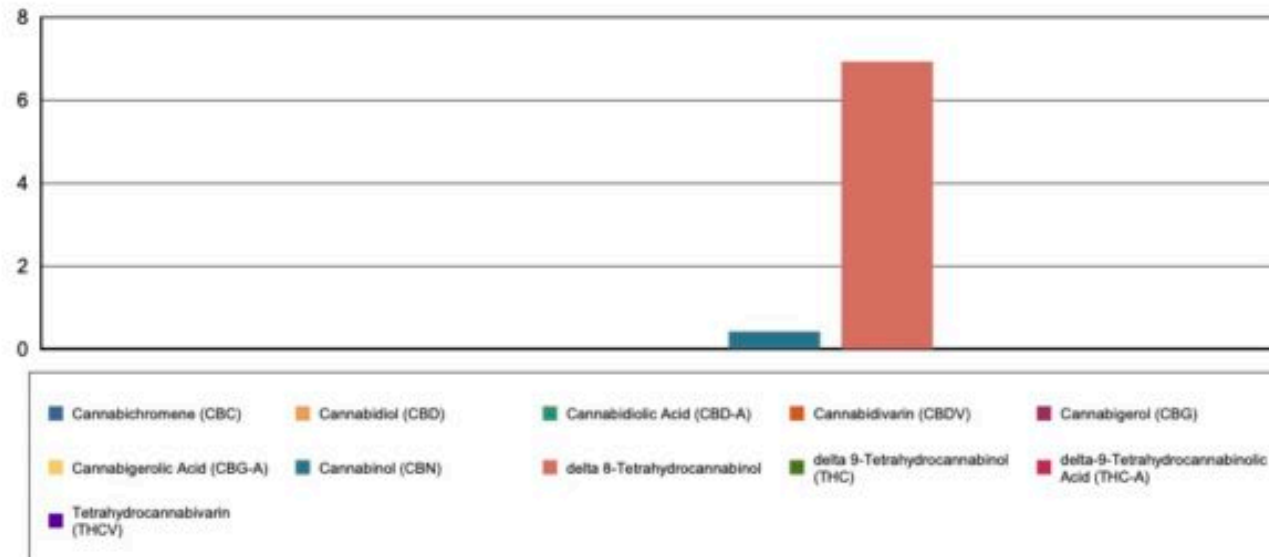
Extraction Technician: DF
 Analytical Chemist: SH

Extraction Date(s)	Analysis Date(s)
12/30/2020	12/30/2020

Cannabinoids (HPLC)		Results		
	LOD (mg/g)	%	mg/g	mg/gummy
Cannabidivarin (CBDV)	<0.006			
Cannabidiolic Acid (CBD-A)	<0.006			
Cannabigerolic Acid (CBG-A)	<0.006			
Cannabigerol (CBG)	<0.006			
Cannabidiol (CBD)	<0.006			
Tetrahydrocannabivarin (THCV)	<0.006			
Cannabinol (CBN)		0.04	0.423	1.64
delta 9-Tetrahydrocannabinol (THC)	<0.006			
delta 8-Tetrahydrocannabinol		0.69	6.93	26.9
Cannabichromene (CBC)	<0.006			
delta-9-Tetrahydrocannabinolic Acid (THC-A)	<0.006			
Cannabinoids Total		%	mg/g	
Max Active THC		0.00	0.00	
Max Active CBD		0.00	0.00	
T.Active Cannabinoids		0.04	0.42	
Total Cannabinoids		0.74	7.35	

Following USDA guidelines on uncertainty, Altitude Consulting's uncertainty are calculated for CBDa and CBD at +/- 4%. The uncertainty for THCa and THC are +/- 5%. This implies the range for a 10% value of CBD to be 9.6-10.4%. The uncertainty range for a 0.30% value of THC would be 0.28-0.32%. The measurement uncertainty is calculated using a coverage factor of 2.

Cannabinoid (mg/g)



Reporting Limits will vary based on sample extraction weight used for the analysis.

Altitude Consulting, LLC utilizes NIST traceable Reference Standards and Certified Reference Material to calibrate analytical instruments along with proven analytical methods. The methods are applied in the most ethical manner following good laboratory practice guidelines. The results of this report are based solely on the sample submitted and cannot be reproduced.



Customer Sample ID: Watermelon
 Laboratory Number: 20L0559-05
 Servings per Container: 4.3342



Cannabinoid Profile

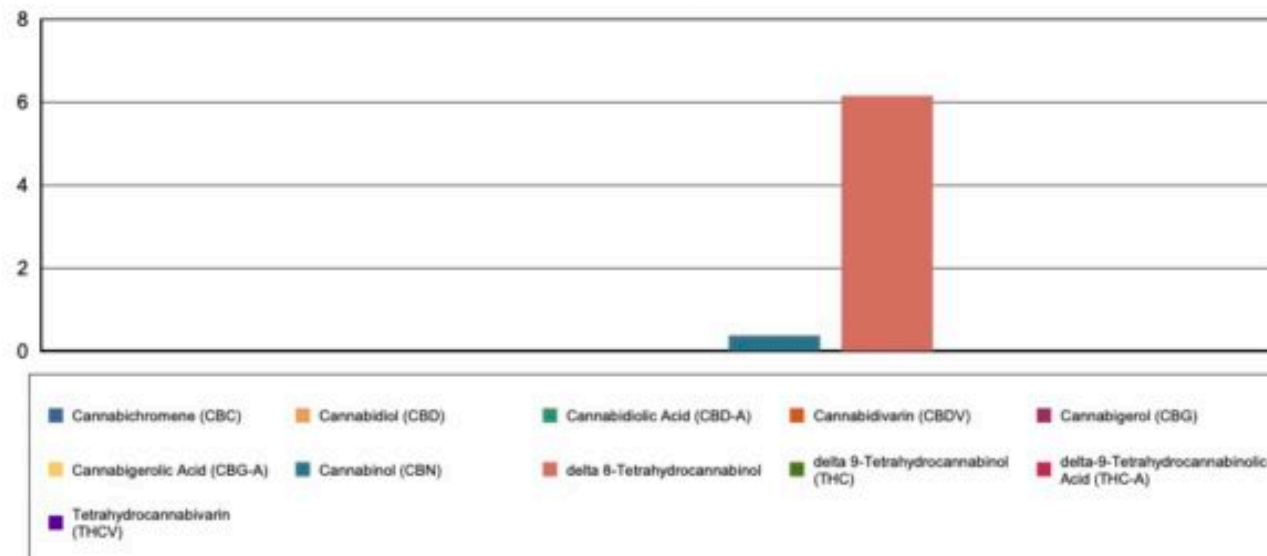
Extraction Technician: DF
 Analytical Chemist: SH

Extraction Date(s)	Analysis Date(s)
12/30/2020	12/30/2020

Cannabinoids (HPLC)		Results		
	LOD (mg/g)	%	mg/g	mg/gummy
Cannabidivarin (CBDV)	<0.005			
Cannabidiolic Acid (CBD-A)	<0.005			
Cannabigerolic Acid (CBG-A)	<0.005			
Cannabigerol (CBG)	<0.005			
Cannabidiol (CBD)	<0.005			
Tetrahydrocannabivarin (THCV)	<0.005			
Cannabinol (CBN)		0.04	0.372	1.61
delta 9-Tetrahydrocannabinol (THC)	<0.005			
delta 8-Tetrahydrocannabinol		0.62	6.16	26.7
Cannabichromene (CBC)	<0.005			
delta-9-Tetrahydrocannabinolic Acid (THC-A)	<0.005			
Cannabinoids Total		%	mg/g	
Max Active THC		0.00	0.00	
Max Active CBD		0.00	0.00	
T.Active Cannabinoids		0.04	0.37	
Total Cannabinoids		0.65	6.53	

Following USDA guidelines on uncertainty, Altitude Consulting's uncertainty are calculated for CBDa and CBD at +/- 4%. The uncertainty for THCa and THC are +/- 5%. This implies the range for a 10% value of CBD to be 9.6-10.4%. The uncertainty range for a 0.30% value of THC would be 0.28-0.32%. The measurement uncertainty is calculated using a coverage factor of 2.

Cannabinoid (mg/g)



Reporting Limits will vary based on sample extraction weight used for the analysis.

Altitude Consulting, LLC utilizes NIST traceable Reference Standards and Certified Reference Material to calibrate analytical instruments along with proven analytical methods. The methods are applied in the most ethical manner following good laboratory practice guidelines. The results of this report are based solely on the sample submitted and cannot be reproduced.



Customer Sample ID: Birthday Cake
 Laboratory Number: 20L0438-05
 Servings per Container: 3.7771



Cannabinoid Profile

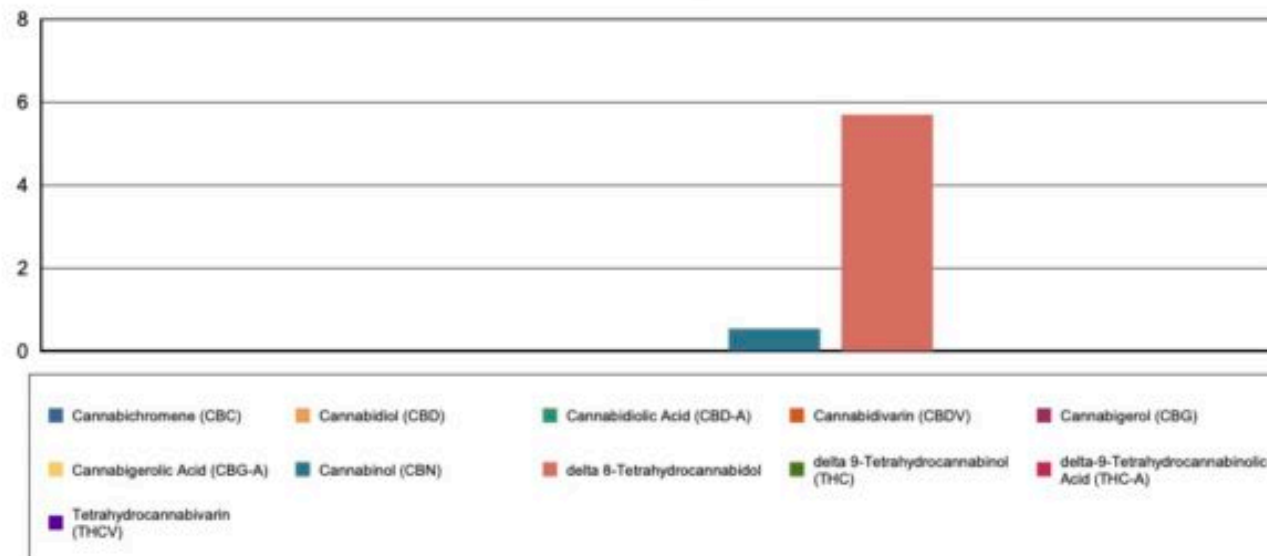
Extraction Technician: DF
 Analytical Chemist: CB

Extraction Date(s)	Analysis Date(s)
12/22/2020	12/22/2020

Cannabinoids (HPLC)		Results		
	LOD (mg/g)	%	mg/g	mg/gummy
Cannabidivarin (CBDV)	<0.007			
Cannabidiolic Acid (CBD-A)	<0.007			
Cannabigerolic Acid (CBG-A)	<0.007			
Cannabigerol (CBG)	<0.007			
Cannabidiol (CBD)	<0.007			
Tetrahydrocannabivarin (THCV)	<0.007			
Cannabinol (CBN)		0.05	0.542	2.05
delta 9-Tetrahydrocannabinol (THC)	<0.007			
delta 8-Tetrahydrocannabidol		0.57	5.70	21.5
Cannabichromene (CBC)	<0.007			
delta-9-Tetrahydrocannabinolic Acid (THC-A)	<0.007			
Cannabinoids Total		%	mg/g	
Max Active THC		0.00	0.00	
Max Active CBD		0.00	0.00	
T.Active Cannabinoids		0.05	0.54	
Total Cannabinoids		0.62	6.24	

Following USDA guidelines on uncertainty, Altitude Consulting's uncertainty are calculated for CBDa and CBD at +/- 4%. The uncertainty for THCa and THC are +/- 5%. This implies the range for a 10% value of CBD to be 9.6-10.4%. The uncertainty range for a 0.30% value of THC would be 0.28-0.32%. The measurement uncertainty is calculated using a coverage factor of 2.

Cannabinoid (mg/g)



Reporting Limits will vary based on sample extraction weight used for the analysis.

Altitude Consulting, LLC utilizes NIST traceable Reference Standards and Certified Reference Material to calibrate analytical instruments along with proven analytical methods. The methods are applied in the most ethical manner following good laboratory practice guidelines. The results of this report are based solely on the sample submitted and cannot be reproduced.



Customer Sample ID: Apple
 Laboratory Number: 20L0438-03
 Servings per Container: 4.0259



Cannabinoid Profile

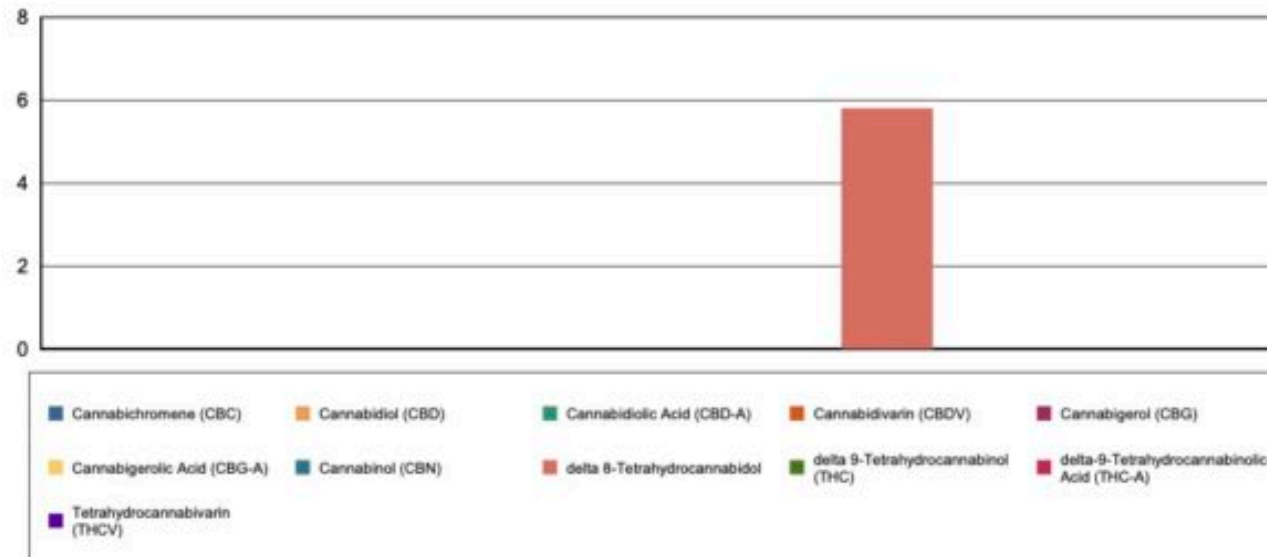
Extraction Technician: DF
 Analytical Chemist: CB

Extraction Date(s)	Analysis Date(s)
12/22/2020	12/22/2020

Cannabinoids (HPLC)		Results		
	LOD (mg/g)	%	mg/g	mg/gummy
Cannabidivarin (CBDV)	<0.007			
Cannabidiolic Acid (CBD-A)	<0.007			
Cannabigerolic Acid (CBG-A)	<0.007			
Cannabigerol (CBG)	<0.007			
Cannabidiol (CBD)	<0.007			
Tetrahydrocannabivarin (THCV)	<0.007			
Cannabinol (CBN)	<0.007			
delta 9-Tetrahydrocannabinol (THC)	<0.007			
delta 8-Tetrahydrocannabinol		0.58	5.81	23.4
Cannabichromene (CBC)	<0.007			
delta-9-Tetrahydrocannabinolic Acid (THC-A)	<0.007			
Cannabinoids Total		%	mg/g	
Max Active THC		0.00	0.00	
Max Active CBD		0.00	0.00	
T.Active Cannabinoids		0.00	0.00	
Total Cannabinoids		0.58	5.81	

Following USDA guidelines on uncertainty, Altitude Consulting's uncertainty are calculated for CBDa and CBD at +/- 4%. The uncertainty for THCa and THC are +/- 5%. This implies the range for a 10% value of CBD to be 9.6-10.4%. The uncertainty range for a 0.30% value of THC would be 0.28-0.32%. The measurement uncertainty is calculated using a coverage factor of 2.

Cannabinoid (mg/g)



Reporting Limits will vary based on sample extraction weight used for the analysis.

Altitude Consulting, LLC utilizes NIST traceable Reference Standards and Certified Reference Material to calibrate analytical instruments along with proven analytical methods. The methods are applied in the most ethical manner following good laboratory practice guidelines. The results of this report are based solely on the sample submitted and cannot be reproduced.



Customer Sample ID: Strawberry Banana
 Laboratory Number: 20L0559-07
 Servings per Container: 3.8207



Cannabinoid Profile

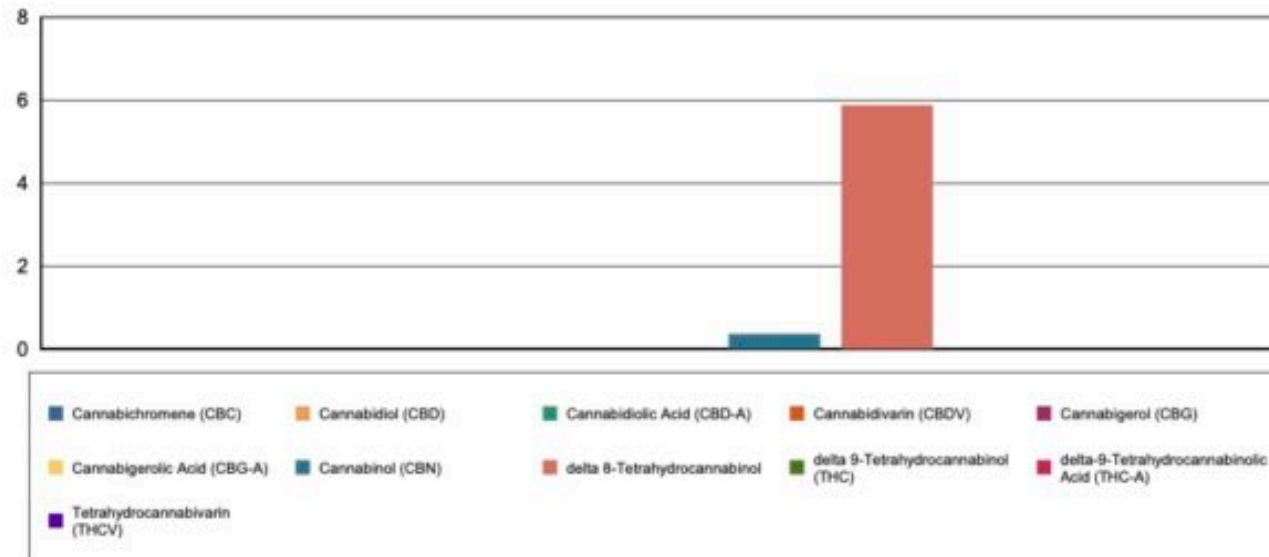
Extraction Technician: DF
 Analytical Chemist: SH

Extraction Date(s)	Analysis Date(s)
12/30/2020	12/30/2020

Cannabinoids (HPLC)		Results		
	LOD (mg/g)	%	mg/g	mg/gummy
Cannabidivarin (CBDV)	<0.006			
Cannabidiolic Acid (CBD-A)	<0.006			
Cannabigerolic Acid (CBG-A)	<0.006			
Cannabigerol (CBG)	<0.006			
Cannabidiol (CBD)	<0.006			
Tetrahydrocannabivarin (THCV)	<0.006			
Cannabinol (CBN)		0.04	0.371	1.42
delta 9-Tetrahydrocannabinol (THC)	<0.006			
delta 8-Tetrahydrocannabinol		0.59	5.88	22.5
Cannabichromene (CBC)	<0.006			
delta-9-Tetrahydrocannabinolic Acid (THC-A)	<0.006			
Cannabinoids Total		%	mg/g	
Max Active THC		0.00	0.00	
Max Active CBD		0.00	0.00	
T.Active Cannabinoids		0.04	0.37	
Total Cannabinoids		0.63	6.25	

Following USDA guidelines on uncertainty, Altitude Consulting's uncertainty are calculated for CBDa and CBD at +/- 4%. The uncertainty for THCa and THC are +/- 5%. This implies the range for a 10% value of CBD to be 9.6-10.4%. The uncertainty range for a 0.30% value of THC would be 0.28-0.32%. The measurement uncertainty is calculated using a coverage factor of 2.

Cannabinoid (mg/g)



Reporting Limits will vary based on sample extraction weight used for the analysis.

Altitude Consulting, LLC utilizes NIST traceable Reference Standards and Certified Reference Material to calibrate analytical instruments along with proven analytical methods. The methods are applied in the most ethical manner following good laboratory practice guidelines. The results of this report are based solely on the sample submitted and cannot be reproduced.