



## Delta-8 Distillate

Lot:

Contents:

Pages:

1. Technical Specifications	2
2. Certificate of Analysis	3
a. Cannabinoid Profile	

## Technical Specifications

---

Material Name: Delta 8-Tetrahydrocannabinol

≥89% Delta-8 THC

### 1. Product Data

#### DESCRIPTION

Kind Spectrum Delta 8-Tetrahydrocannabinol Distillate (Delta-8) is derived from Industrial Hemp Biomass. The hemp biomass goes through a primary extraction using denatured ethyl alcohol, CO<sub>2</sub>, or approved hydrocarbon solvents. The hemp extract is then further refined before undergoing proprietary processing into high purity Delta-8 distillate.

#### INTENDED USE

Delta-8 Distillate is an active ingredient to be further formulated, on its own it is not a finished product. The intended use is specific to the customer and industry.

#### COUNTY OF ORIGIN

Made in USA with 100% American ingredients

#### INCOMPATIBILITIES

No known incompatibilities or interactions

#### STANDARD PACKAGING

1 liter food-grade scientific media storage bottle

#### SHELF LIFE

18 months after packaging

#### STORAGE & HANDLING

Store in original, tightly closed container(s) under dry condition at ambient temperature. Limit exposure to light. \*Once cannabinoids are exposed to air, they may oxidize and change in color.

#### ALLERGEN STATEMENT

Does not contain beef, buckwheat, celery, gluten, chicken, crustacean shellfish, egg, fish, lupin, mango, milk, molluscan shellfish, mustard, peach, peanut, pork, sesame, soy, tree nuts, tomato, or wheat.

#### FDA STATEMENT

These statements have not been evaluated by the Food and Drug Administration. This product is not intended to treat, diagnose, cure, or prevent any disease.

#### WARNING STATEMENT

Not recommended for children, pregnant, or nursing women, If taking medication, consult a physician before use. Keep out of the reach of children.

### 2. Specifications - General Information

#### APPEARANCE

Amber colored distillate

#### FLAVOR

No flavor

#### ODOR

No odor

#### CONSISTENCY

Thick, stable, sticky

#### SOLUBILITY

Oil

#### COMPOSITION

100% hemp extract



DEA No. RA0571996  
 FL License # CMTL-0003  
 CLIA No. 10D1094068

# Certificate of Analysis

Compliance Test

**KIND SPECTRUM**  
 1624 MARKET ST.  
 STE 226 PMB 20056  
 DENVER, CO 80202

Batch # D8 Distillate  
 Batch Date: 2022-04-27  
 Extracted From: HEMP

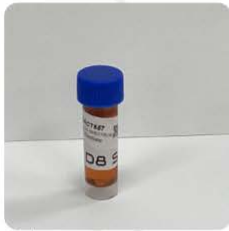
Test Reg State: Florida

Production Facility: Kind Spectrum  
 Production Date: 2022-04-27

Order # KIN220427-040001  
 Order Date: 2022-04-27  
 Sample # AACT557

Sampling Date: 2022-04-29  
 Lab Batch Date: 2022-04-29  
 Completion Date: 2022-05-02

Initial Gross Weight: 9.988 g



Product Image

**Potency  
 Tested**

**Delta 8/Delta 10  
 Potency 12**

Specimen Weight: 55.280 mg

Analyte	LOD (%)	LOQ (%)	Result (mg/g)	(%)
Delta 8 THC	0.000026	0.001	870.970	87.097
CBN	0.000014	0.001	4.450	0.445
CBG	0.000018	0.001	<LOQ	
CBD	0.000054	0.001	<LOQ	
THCA	0.000032	0.001	<LOQ	
Delta-9 THC	0.000013	0.001	<LOQ	
Delta-10 THC	0.000003	0.001	<LOQ	
CBGA	0.000008	0.001	<LOQ	
CBG	0.0000248	0.001	<LOQ	
CBDV	0.000065	0.001	<LOQ	
CBDA	0.000001	0.001	<LOQ	
THCV	0.000007	0.001	<LOQ	

**Tested  
 (LCUV)**

**Potency Summary**

<b>Total Delta 8</b> 87.097%	-	<b>Total Delta 10</b> None Detected
<b>Total THC</b> None Detected	-	<b>Total CBD</b> None Detected
<b>Total CBG</b> None Detected	-	<b>Total CBN</b> 0.445%
<b>Other Cannabinoids</b> None Detected	-	<b>Total Cannabinoids</b> 87.542%

Xueli Gao  
 Ph.D., DABT  
 Lab Toxicologist

Axia Sun  
 D.H.Sc., M.Sc., B.Sc., MT (AAB)  
 Lab Director/Principal Scientist



Definitions and Abbreviations used in this report: \*Total CBD = CBD + (CBD-A \* 0.877), \*Total CBDV = CBDV + (CBDVA \* 0.877), \*Total THC = THCA-A \* 0.877 + Delta 9 THC, \*Total THCV = THCV + (THCVA \* 0.877), \*CBG Total = (CBGA \* 0.877) + CBG, \*CBN Total = (CBNA \* 0.877) + CBN, \*Total CBG = CBG + (CBGA \* 0.877), \*Total THC-O-Acetate = Delta 8 THC-O-Acetate + Delta 9 THC-O-Acetate, \*Other Cannabinoids Total = Total Cannabinoids - All the listed cannabinoids on the summary section, \*Total Detected Cannabinoids = Delta8-THC + Delta9-THC + Total CBN + CBT + Delta8-THCV + Total CBG + Total CBD + Total THCV + CBL + Total THC + Total CBG + Total CBDV + Delta10-THC + Total THC-O-Acetate, \*Analyte Details above show the Dry Weight Concentrations unless specified as 12% moisture concentration. (mg/ml) = Milligrams per Milliliter, LOQ = Limit of Quantitation, LOD = Limit of Detection, Dilution = Dilution Factor (ppb) = Parts per Billion, (%) = Percent, (cfu/g) = Colony Forming Unit per Gram (cfu/g) = Colony Forming Unit per Gram, \*LOD = Limit of Detection, (µg/g) = Microgram per Gram (ppm) = Parts per Million, (ppm) = (µg/g), (aw) = aw (area ratio) = Area Ratio, (mg/Kg) = Milligram per Kilogram, \*Measurement of Uncertainty = +/- 10%

This report shall not be reproduced, without written approval, from ACS Laboratory. The results of this report relate only to the material or product analyzed. Test results are confidential unless explicitly waived otherwise. Accredited by a third-party accrediting body as a competent testing laboratory pursuant to ISO/IEC 17025 of the International Organization for Standardization.