



DEA No. RA0571996  
FL License # CMTL-0003  
CLIA No. 10D1094068

# Certificate of Analysis

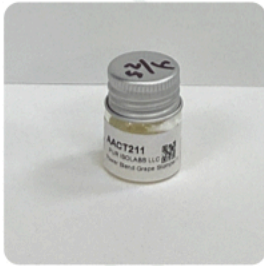
Compliance Test

**White Label Leaf**  
6205 John's Road  
STE 9  
Tampa, Florida 33634

Batch # Power Blend Grape Stomper FM-005  
Test Reg State: Florida  
Batch Date: 2022-04-25  
Extracted From: Hemp

Order # PUR220425-120001  
Order Date: 2022-04-25  
Sample # AACT211

Sampling Date: 2022-04-26  
Lab Batch Date: 2022-04-26  
Completion Date: 2022-04-29  
Initial Gross Weight: 10.109 g



Potency  
Tested

Product Image

Analyte	Dilution (1:n)	LOD (%)	LOQ (%)	Result (mg/g)		Tested (LCUV)
				(mg/g)	(%)	
Delta-8 THC	1000.000	0.000026	0.0015	588.9000	58.8900	
Delta-8 THC-O Acetate	100.000	0.000027	0.0003	106.2000	10.6200	
CBNA	10.000	0.000095	0.0015	4.6350	0.4635	
Delta-9 THC-O Acetate	10.000	0.000077	0.0003	3.8360	0.3836	
CBN	10.000	0.000014	0.0015	3.6460	0.3646	
CBT	10.000	0.0002	0.0015	2.8610	0.2861	
Delta-8 THCV	10.000	0.00004	0.0015	2.5920	0.2592	
CBD	10.000	0.000054	0.0015	0.5970	0.0597	
CBDA	10.000	0.00001	0.0015	0.5890	0.0589	
THCA	10.000	0.000032	0.0015	0.4490	0.0449	
CBC	10.000	0.000018	0.0015	<LOQ	<LOQ	
THCVA	10.000	0.000047	0.0015	<LOQ	<LOQ	
THCV	10.000	0.000007	0.0015	<LOQ	<LOQ	
Exo-THC	10.000	0.00023	0.0015	<LOQ	<LOQ	
CBCA	10.000	0.000107	0.0015	<LOQ	<LOQ	
CBL	10.000	0.000035	0.0015	<LOQ	<LOQ	
CBGA	10.000	0.00008	0.0015	<LOQ	<LOQ	
CBG	10.000	0.000248	0.0015	<LOQ	<LOQ	
CBDVA	10.000	0.000014	0.0015	<LOQ	<LOQ	
CBDV	10.000	0.000065	0.0015	<LOQ	<LOQ	
Delta-9 THC	10.000	0.000013	0.0015	<LOQ	<LOQ	

Potency Summary

<b>Total THC</b> 0.039%	<b>Total CBD</b> 0.111%
<b>Total CBG</b> None Detected	<b>Total CBN</b> 0.771%
<b>Other Cannabinoids</b> 70.439%	<b>Total Cannabinoids</b> 71.361%

Xueli Gao  
Ph.D., DABT  
Lab Toxicologist

Aixa Sun  
Lab Director/Principal Scientist  
D.H.Sc., M.Sc., B.Sc., MT (AAB)



Definitions and Abbreviations used in this report: \*Total CBD = CBD + (CBD-A \* 0.877), \*Total CBDV = CBDV + (CBDVA \* 0.87), \*Total THC = THCA-A \* 0.877 + Delta 9 THC, \*Total THCV = THCV + (THCVA \* 0.87), \*CBG Total = (CBGA \* 0.877) + CBG, \*CBN Total = (CBNA \* 0.877) + CBN, \*Total CBC = CBC + (CBCA \* 0.877), \*Total THC-O-Acetate = Delta 8 THC-O-Acetate + Delta 9 THC-O-Acetate, \*Other Cannabinoids Total = Total Cannabinoids - All the listed cannabinoids on the summary section, \*Total Detected Cannabinoids = Delta610-THC + Delta8-THC + Total CBN + CBT + Delta8-THCV + Total CBG + Total CBD + Total THCV + CBL + Total THC + Total CBC + Total CBDV + Delta10-THC + Total THC-O-Acetate, \*Analyte Details above show the Dry Weight Concentrations unless specified as 12% moisture concentration. (mg/ml) = Milligrams per Milliliter, LOQ = Limit of Quantitation, LOD = Limit of Detection, Dilution = Dilution Factor (ppb) = Parts per Billion, (%) = Percent, (cfu/g) = Colony Forming Unit per Gram (cfu/g) = Colony Forming Unit per Gram, LOD = Limit of Detection, (µg/g) = Microgram per Gram (ppm) = Parts per Million, (ppm) = (µg/g), (aw) = aw (area ratio) = Area Ratio, (mg/Kg) = Milligram per Kilogram, \*Measurement of Uncertainty = +/- 10%



This report shall not be reproduced, without written approval, from ACS Laboratory. The results of this report relate only to the material or product analyzed. Test results are confidential unless explicitly waived otherwise. Accredited by a third-party accrediting body as a competent testing laboratory pursuant to ISO/IEC 17025 of the International Organization for Standardization.



DEA No. RA0571996  
FL License # CMTL-0003  
CLIA No. 10D1094068

# Certificate of Analysis

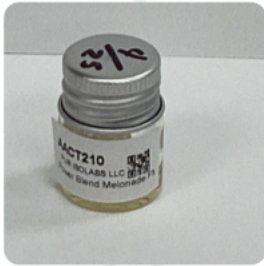
## Compliance Test

**White Label Leaf**  
6205 John's Road  
STE 9  
Tampa, Florida 33634

Batch # Power Blend Melonade FM-005    Test Reg State: Florida  
Batch Date: 2022-04-25  
Extracted From: Hemp

Order # PUR220425-120001  
Order Date: 2022-04-25  
Sample # AACT210

Sampling Date: 2022-04-26    Initial Gross Weight: 9.188 g  
Lab Batch Date: 2022-04-26  
Completion Date: 2022-04-29



Potency  
Tested

Product Image

Analyte	Dilution (1:n)	LOD (%)	LOQ (%)	Result (mg/g)		Tested (LCUV)
				(mg/g)	(%)	
Delta-8 THC	1000.000	0.000026	0.0015	617.9000	61.7900	
Delta-8 THC-O Acetate	100.000	0.000027	0.0003	107.3000	10.7300	
CBNA	10.000	0.000095	0.0015	4.6970	0.4697	
Delta-9 THC-O Acetate	10.000	0.000077	0.0003	3.9710	0.3971	
CBN	10.000	0.000014	0.0015	3.6590	0.3659	
CBT	10.000	0.0002	0.0015	2.8710	0.2871	
Delta-8 THCV	10.000	0.00004	0.0015	2.6290	0.2629	
CBD	10.000	0.000054	0.0015	0.6430	0.0643	
CBDA	10.000	0.00001	0.0015	0.6360	0.0636	
THCA	10.000	0.000032	0.0015	0.4530	0.0453	
CBC	10.000	0.000018	0.0015	<LOQ	<LOQ	
THCVA	10.000	0.000047	0.0015	<LOQ	<LOQ	
THCV	10.000	0.000007	0.0015	<LOQ	<LOQ	
Exo-THC	10.000	0.00023	0.0015	<LOQ	<LOQ	
CBCA	10.000	0.000107	0.0015	<LOQ	<LOQ	
CBL	10.000	0.000035	0.0015	<LOQ	<LOQ	
CBGA	10.000	0.00008	0.0015	<LOQ	<LOQ	
CBG	10.000	0.000248	0.0015	<LOQ	<LOQ	
CBDVA	10.000	0.000014	0.0015	<LOQ	<LOQ	
CBDV	10.000	0.000065	0.0015	<LOQ	<LOQ	
Delta-9 THC	10.000	0.000013	0.0015	<LOQ	<LOQ	

### Potency Summary

<b>Total THC</b> 0.040%	<b>Total CBD</b> 0.120%
<b>Total CBG</b> None Detected	<b>Total CBN</b> 0.778%
<b>Other Cannabinoids</b> 73.467%	<b>Total Cannabinoids</b> 74.405%

Xueli Gao  
Ph.D., DABT    Lab Toxicologist

Aixa Sun    Lab Director/Principal Scientist  
D.H.Sc., M.Sc., B.Sc., MT (AAB)



Definitions and Abbreviations used in this report: \*Total CBD = CBD + (CBD-A \* 0.877), \*Total CBDV = CBDV + (CBDVA \* 0.87), \*Total THC = THCA-A \* 0.877 + Delta 9 THC, \*Total THCV = THCV + (THCVA \* 0.87), \*CBG Total = (CBGA \* 0.877) + CBG, \*CBN Total = (CBNA \* 0.877) + CBN, \*Total CBC = CBC + (CBCA \* 0.877), \*Total THC-O-Acetate = Delta 8 THC-O-Acetate + Delta 9 THC-O-Acetate, \*Other Cannabinoids Total = Total Cannabinoids - All the listed cannabinoids on the summary section, \*Total Detected Cannabinoids = Delta10-THC + Delta8-THC + Total CBN + CBT + Delta8-THCV + Total CBG + Total CBD + Total THCV + CBL + Total THC + Total CBC + Total CBDV + Delta10-THC + Total THC-O-Acetate, \*Analyte Details above show the Dry Weight Concentrations unless specified as 12% moisture concentration. (mg/ml) = Milligrams per Milliliter, LOQ = Limit of Quantitation, LOD = Limit of Detection, Dilution = Dilution Factor (ppb) = Parts per Billion, (%) = Percent, (cfu/g) = Colony Forming Unit per Gram (cfu/g) = Colony Forming Unit per Gram, LOD = Limit of Detection, (µg/g) = Microgram per Gram (ppm) = Parts per Million, (ppm) = (µg/g), (aw) = aw (area ratio) = Area Ratio, (mg/Kg) = Milligram per Kilogram, \*Measurement of Uncertainty = +/- 10%



This report shall not be reproduced, without written approval, from ACS Laboratory. The results of this report relate only to the material or product analyzed. Test results are confidential unless explicitly waived otherwise. Accredited by a third-party accrediting body as a competent testing laboratory pursuant to ISO/IEC 17025 of the International Organization for Standardization.



# Certificate of Analysis

## Compliance Test

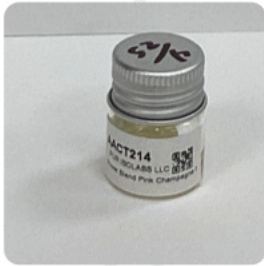
**White Label Leaf**  
6205 John's Road  
STE 9  
Tampa, Florida 33634

Batch # Power Blend Pink Champagne FM- 005  
Test Reg State: Florida  
Batch Date: 2022-04-25  
Extracted From: Hemp

Order # PUR220425-120001  
Order Date: 2022-04-25  
Sample # AACT214

Sampling Date: 2022-04-26  
Lab Batch Date: 2022-04-26  
Completion Date: 2022-04-29

Initial Gross Weight: 9.550 g



Potency Tested

Product Image

Analyte	Dilution (1:n)	LOD (%)	LOQ (%)	Result (mg/g)		Tested (LCUV)
				(mg/g)	(%)	
Delta-8 THC	1000.000	0.000026	0.0015	625.3000	62.5300	
Delta-8 THC-O Acetate	100.000	0.000027	0.0003	105.1000	10.5100	
CBNA	10.000	0.000095	0.0015	4.5730	0.4573	
Delta-9 THC-O Acetate	10.000	0.000077	0.0003	3.8210	0.3821	
CBN	10.000	0.000014	0.0015	3.5420	0.3542	
CBT	10.000	0.0002	0.0015	2.9610	0.2961	
Delta-8 THCV	10.000	0.00004	0.0015	2.5600	0.2560	
CBD	10.000	0.000054	0.0015	0.5920	0.0592	
CBDA	10.000	0.00001	0.0015	0.5800	0.0580	
THCA	10.000	0.000032	0.0015	0.4540	0.0454	
CBC	10.000	0.000018	0.0015	<LOQ	<LOQ	
THCVA	10.000	0.000047	0.0015	<LOQ	<LOQ	
THCV	10.000	0.000007	0.0015	<LOQ	<LOQ	
Exo-THC	10.000	0.00023	0.0015	<LOQ	<LOQ	
CBCA	10.000	0.000107	0.0015	<LOQ	<LOQ	
CBL	10.000	0.000035	0.0015	<LOQ	<LOQ	
CBGA	10.000	0.00008	0.0015	<LOQ	<LOQ	
CBG	10.000	0.000248	0.0015	<LOQ	<LOQ	
CBDVA	10.000	0.000014	0.0015	<LOQ	<LOQ	
CBDV	10.000	0.000065	0.0015	<LOQ	<LOQ	
Delta-9 THC	10.000	0.000013	0.0015	<LOQ	<LOQ	

### Potency Summary

<b>Total THC</b> 0.040%	<b>Total CBD</b> 0.110%
<b>Total CBG</b> None Detected	<b>Total CBN</b> 0.755%
<b>Other Cannabinoids</b> 73.974%	<b>Total Cannabinoids</b> 74.879%

Xueli Gao  
Ph.D., DABT  
Lab Toxicologist

Aixa Sun  
Lab Director/Principal Scientist  
D.H.Sc., M.Sc., B.Sc., MT (AAB)



Definitions and Abbreviations used in this report: \*Total CBD = CBD + (CBD-A \* 0.877), \*Total CBDV = CBDV + (CBDVA \* 0.87), \*Total THC = THCA-A \* 0.877 + Delta 9 THC, \*Total THCV = THCV + (THCVA \* 0.87), \*CBG Total = (CBGA \* 0.877) + CBG, \*CBN Total = (CBNA \* 0.877) + CBN, \*Total CBC = CBC + (CBCA \* 0.877), \*Total THC-O-Acetate = Delta 8 THC-O-Acetate + Delta 9 THC-O-Acetate, \*Other Cannabinoids Total = Total Cannabinoids - All the listed cannabinoids on the summary section, \*Total Detected Cannabinoids = Delta 10-THC + Delta 8-THC + Total CBN + CBT + Delta 8-THCV + Total CBG + Total CBD + Total THCV + CBL + Total THC + Total CBC + Total CBDV + Delta 10-THC + Total THC-O-Acetate, \*Analyte Details above show the Dry Weight Concentrations unless specified as 12% moisture concentration. (mg/ml) = Milligrams per Milliliter, LOQ = Limit of Quantitation, LOD = Limit of Detection, Dilution = Dilution Factor (ppb) = Parts per Billion, (%) = Percent, (cfu/g) = Colony Forming Unit per Gram (cfu/g) = Colony Forming Unit per Gram, LOD = Limit of Detection, (µg/g) = Microgram per Gram (ppm) = Parts per Million, (ppm) = (µg/g), (aw) = aw (area ratio) = Area Ratio, (mg/Kg) = Milligram per Kilogram, \*Measurement of Uncertainty = +/- 10%



This report shall not be reproduced, without written approval, from ACS Laboratory. The results of this report relate only to the material or product analyzed. Test results are confidential unless explicitly waived otherwise. Accredited by a third-party accrediting body as a competent testing laboratory pursuant to ISO/IEC 17025 of the International Organization for Standardization.



DEA No. RA0571996  
FL License # CMTL-0003  
CLIA No. 10D1094068

# Certificate of Analysis

## Compliance Test

**White Label Leaf**  
6205 John's Road  
STE 9  
Tampa, Florida 33634

Batch # Power Blend Space Cadet FM-005 Test Reg State: Florida  
Batch Date: 2022-04-25  
Extracted From: Hemp

Order # PUR220425-120001  
Order Date: 2022-04-25  
Sample # AACT206

Sampling Date: 2022-04-26 Initial Gross Weight: 9.015 g  
Lab Batch Date: 2022-04-26  
Completion Date: 2022-04-29



Potency  
Tested

Product Image

Analyte	Dilution (1:n)	LOD (%)	LOQ (%)	Result		Tested (LCUV)
				(mg/g)	(%)	
<b>Potency 21 (LCUV)</b> Specimen Weight: 45.300 mg						
Delta-8 THC	1000.000	0.000026	0.0015	604.3000	60.4300	
Delta-8 THC-O Acetate	100.000	0.000027	0.0003	108.8000	10.8800	
CBNA	10.000	0.000095	0.0015	4.7940	0.4794	
Delta-9 THC-O Acetate	10.000	0.000077	0.0003	4.0630	0.4063	
CBN	10.000	0.000014	0.0015	3.6270	0.3627	
CBT	10.000	0.0002	0.0015	2.9290	0.2929	
Delta-8 THCV	10.000	0.00004	0.0015	2.6960	0.2696	
CBDA	10.000	0.00001	0.0015	0.6540	0.0654	
CBD	10.000	0.000054	0.0015	0.6470	0.0647	
THCA	10.000	0.000032	0.0015	0.4790	0.0479	
CBC	10.000	0.000018	0.0015	<LOQ	<LOQ	
THCVA	10.000	0.000047	0.0015	<LOQ	<LOQ	
THCV	10.000	0.000007	0.0015	<LOQ	<LOQ	
Exo-THC	10.000	0.00023	0.0015	<LOQ	<LOQ	
CBCA	10.000	0.000107	0.0015	<LOQ	<LOQ	
CBL	10.000	0.000035	0.0015	<LOQ	<LOQ	
CBGA	10.000	0.00008	0.0015	<LOQ	<LOQ	
CBG	10.000	0.000248	0.0015	<LOQ	<LOQ	
CBDVA	10.000	0.000014	0.0015	<LOQ	<LOQ	
CBDV	10.000	0.000065	0.0015	<LOQ	<LOQ	
Delta-9 THC	10.000	0.000013	0.0015	<LOQ	<LOQ	

### Potency Summary

<b>Total THC</b> 0.042%	<b>Total CBD</b> 0.122%
<b>Total CBG</b> None Detected	<b>Total CBN</b> 0.783%
<b>Other Cannabinoids</b> 72.279%	<b>Total Cannabinoids</b> 73.226%

Xueli Gao  
Ph.D., DABT  
Lab Toxicologist

Aixa Sun  
Lab Director/Principal Scientist  
D.H.Sc., M.Sc., B.Sc., MT (AAB)



Definitions and Abbreviations used in this report: \*Total CBD = CBD + (CBD-A \* 0.877), \*Total CBDV = CBDV + (CBDVA \* 0.87), \*Total THC = THCA-A \* 0.877 + Delta 9 THC, \*Total THCV = THCV + (THCVA \* 0.87), \*CBG Total = (CBGA \* 0.877) + CBG, \*CBN Total = (CBNA \* 0.877) + CBN, \*Total CBC = CBC + (CBCA \* 0.877), \*Total THC-O-Acetate = Delta 8 THC-O-Acetate + Delta 9 THC-O-Acetate, \*Other Cannabinoids Total = Total Cannabinoids - All the listed cannabinoids on the summary section, \*Total Detected Cannabinoids = Delta10-THC + Delta8-THC + Total CBN + CBT + Delta8-THCV + Total CBG + Total CBD + Total THCV + CBL + Total THC + Total CBC + Total CBDV + Delta10-THC + Total THC-O-Acetate, \*Analyte Details above show the Dry Weight Concentrations unless specified as 12% moisture concentration. (mg/ml) = Milligrams per Milliliter, LOQ = Limit of Quantitation, LOD = Limit of Detection, Dilution = Dilution Factor (ppb) = Parts per Billion, (%) = Percent, (cfu/g) = Colony Forming Unit per Gram (cfu/g) = Colony Forming Unit per Gram, LOD = Limit of Detection, (µg/g) = Microgram per Gram (ppm) = Parts per Million, (ppm) = (µg/g), (aw) = aw (area ratio) = Area Ratio, (mg/Kg) = Milligram per Kilogram, \*Measurement of Uncertainty = +/- 10%



This report shall not be reproduced, without written approval, from ACS Laboratory. The results of this report relate only to the material or product analyzed. Test results are confidential unless explicitly waived otherwise. Accredited by a third-party accrediting body as a competent testing laboratory pursuant to ISO/IEC 17025 of the International Organization for Standardization.



DEA No. RA0571996  
FL License # CMTL-0003  
CLIA No. 10D1094068

# Certificate of Analysis

Compliance Test

**White Label Leaf**  
6205 John's Road  
STE 9  
Tampa, Florida 33634

Batch # Power Blend Strawberry FM-005    Test Reg State: Florida  
Batch Date: 2022-04-25  
Extracted From: Hemp

Order # PUR220425-120001  
Order Date: 2022-04-25  
Sample # AACT207

Sampling Date: 2022-04-26    Initial Gross Weight: 9.256 g  
Lab Batch Date: 2022-04-26  
Completion Date: 2022-04-29



Potency  
Tested

Product Image

Analyte	Dilution (1:n)	LOD (%)	LOQ (%)	Result (mg/g)		Tested (LCUV)
				(mg/g)	(%)	
Delta-8 THC	1000.000	0.000026	0.0015	595.4000	59.5400	
Delta-8 THC-O Acetate	100.000	0.000027	0.0003	105.4000	10.5400	
CBNA	10.000	0.000095	0.0015	4.7550	0.4755	
Delta-9 THC-O Acetate	10.000	0.000077	0.0003	3.9730	0.3973	
CBN	10.000	0.000014	0.0015	3.5870	0.3587	
CBT	10.000	0.0002	0.0015	2.8930	0.2893	
Delta-8 THCV	10.000	0.00004	0.0015	2.6570	0.2657	
CBDA	10.000	0.00001	0.0015	0.6580	0.0658	
CBD	10.000	0.000054	0.0015	0.6470	0.0647	
THCA	10.000	0.000032	0.0015	0.4640	0.0464	
CBC	10.000	0.000018	0.0015	<LOQ	<LOQ	
THCVA	10.000	0.000047	0.0015	<LOQ	<LOQ	
THCV	10.000	0.000007	0.0015	<LOQ	<LOQ	
Exo-THC	10.000	0.00023	0.0015	<LOQ	<LOQ	
CBCA	10.000	0.000107	0.0015	<LOQ	<LOQ	
CBL	10.000	0.000035	0.0015	<LOQ	<LOQ	
CBGA	10.000	0.00008	0.0015	<LOQ	<LOQ	
CBG	10.000	0.000248	0.0015	<LOQ	<LOQ	
CBDVA	10.000	0.000014	0.0015	<LOQ	<LOQ	
CBDV	10.000	0.000065	0.0015	<LOQ	<LOQ	
Delta-9 THC	10.000	0.000013	0.0015	<LOQ	<LOQ	

Potency Summary

<b>Total THC</b> 0.041%	<b>Total CBD</b> 0.122%
<b>Total CBG</b> None Detected	<b>Total CBN</b> 0.776%
<b>Other Cannabinoids</b> 71.032%	<b>Total Cannabinoids</b> 71.971%

*Xueli Gao*  
Xueli Gao  
Ph.D., DABT    Lab Toxicologist

*Alivia Sun*  
Alivia Sun  
D.H.Sc., M.Sc., B.Sc., MT (AAB)    Lab Director/Principal Scientist



Definitions and Abbreviations used in this report: \*Total CBD = CBD + (CBD-A \* 0.877), \*Total CBDV = CBDV + (CBDVA \* 0.87), \*Total THC = THCA-A \* 0.877 + Delta 9 THC, \*Total THCV = THCV + (THCVA \* 0.87), \*CBG Total = (CBGA \* 0.877) + CBG, \*CBN Total = (CBNA \* 0.877) + CBN, \*Total CBC = CBC + (CBCA \* 0.877), \*Total THC-O-Acetate = Delta 8 THC-O-Acetate + Delta 9 THC-O-Acetate, \*Other Cannabinoids Total = Total Cannabinoids - All the listed cannabinoids on the summary section, \*Total Detected Cannabinoids = Delta8-THC + Delta9-THC + Total CBN + CBT + Delta8-THCV + Total CBG + Total CBD + Total THCV + CBL + Total THC + Total CBC + Total CBDV + Delta10-THC + Total THC-O-Acetate, \*Analyte Details above show the Dry Weight Concentrations unless specified as 12% moisture concentration. (mg/ml) = Milligrams per Milliliter, LOQ = Limit of Quantitation, LOD = Limit of Detection, Dilution = Dilution Factor (ppb) = Parts per Billion, (%) = Percent, (cfu/g) = Colony Forming Unit per Gram (cfu/g) = Colony Forming Unit per Gram, LOD = Limit of Detection, (µg/g) = Microgram per Gram (ppm) = Parts per Million, (ppm) = (µg/g), (aw) = aw (area ratio) = Area Ratio, (mg/Kg) = Milligram per Kilogram, \*Measurement of Uncertainty = +/- 10%

This report shall not be reproduced, without written approval, from ACS Laboratory. The results of this report relate only to the material or product analyzed. Test results are confidential unless explicitly waived otherwise. Accredited by a third-party accrediting body as a competent testing laboratory pursuant to ISO/IEC 17025 of the International Organization for Standardization.



DEA No. RA0571996  
FL License # CMTL-0003  
CLIA No. 10D1094068

# Certificate of Analysis

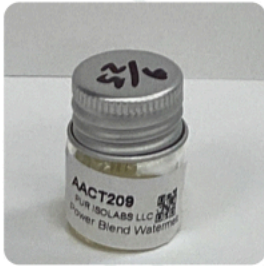
Compliance Test

**White Label Leaf**  
6205 John's Road  
STE 9  
Tampa, Florida 33634

Batch # Power Blend Watermelon Skittlez    Test Reg State: Florida  
FM-005  
Batch Date: 2022-04-25  
Extracted From: Hemp

Order # PUR220425-120001  
Order Date: 2022-04-25  
Sample # AACT209

Sampling Date: 2022-04-26    Initial Gross Weight: 9.258 g  
Lab Batch Date: 2022-04-26  
Completion Date: 2022-04-29



Potency  
Tested

Product Image

Analyte	Dilution (1:n)	LOD (%)	LOQ (%)	Result (mg/g)		Tested (LCUV)
				(mg/g)	(%)	
Delta-8 THC	1000.000	0.000026	0.0015	626.4000	62.6400	
Delta-8 THC-O Acetate	100.000	0.000027	0.0003	107.1000	10.7100	
CBNA	10.000	0.000095	0.0015	4.7040	0.4704	
Delta-9 THC-O Acetate	10.000	0.000077	0.0003	4.0210	0.4021	
CBN	10.000	0.000014	0.0015	3.6290	0.3629	
CBT	10.000	0.0002	0.0015	2.9660	0.2966	
Delta-8 THCV	10.000	0.00004	0.0015	2.6450	0.2645	
CBD	10.000	0.000054	0.0015	0.6310	0.0631	
CBDA	10.000	0.00001	0.0015	0.6020	0.0602	
THCA	10.000	0.000032	0.0015	0.4470	0.0447	
CBC	10.000	0.000018	0.0015	<LOQ	<LOQ	
THCVA	10.000	0.000047	0.0015	<LOQ	<LOQ	
THCV	10.000	0.000007	0.0015	<LOQ	<LOQ	
Exo-THC	10.000	0.00023	0.0015	<LOQ	<LOQ	
CBCA	10.000	0.000107	0.0015	<LOQ	<LOQ	
CBL	10.000	0.000035	0.0015	<LOQ	<LOQ	
CBGA	10.000	0.00008	0.0015	<LOQ	<LOQ	
CBG	10.000	0.000248	0.0015	<LOQ	<LOQ	
CBDVA	10.000	0.000014	0.0015	<LOQ	<LOQ	
CBDV	10.000	0.000065	0.0015	<LOQ	<LOQ	
Delta-9 THC	10.000	0.000013	0.0015	<LOQ	<LOQ	

Potency Summary

<b>Total THC</b> 0.039%	<b>Total CBD</b> 0.116%
<b>Total CBG</b> None Detected	<b>Total CBN</b> 0.775%
<b>Other Cannabinoids</b> 74.313%	<b>Total Cannabinoids</b> 75.244%

Xueli Gao  
Ph.D., DABT    Lab Toxicologist

Aixa Sun    Lab Director/Principal Scientist  
D.H.Sc., M.Sc., B.Sc., MT (AAB)



Definitions and Abbreviations used in this report: \*Total CBD = CBD + (CBD-A \* 0.877), \*Total CBDV = CBDV + (CBDVA \* 0.87), \*Total THC = THCA-A \* 0.877 + Delta 9 THC, \*Total THCV = THCV + (THCVA \* 0.87), \*CBG Total = (CBGA \* 0.877) + CBG, \*CBN Total = (CBNA \* 0.877) + CBN, \*Total CBC = CBC + (CBCA \* 0.877), \*Total THC-O-Acetate = Delta 8 THC-O-Acetate + Delta 9 THC-O-Acetate, \*Other Cannabinoids Total = Total Cannabinoids - All the listed cannabinoids on the summary section, \*Total Detected Cannabinoids = Delta10-THC + Delta8-THC + Total CBN + CBT + Delta8-THCV + Total CBG + Total CBD + Total THCV + CBL + Total THC + Total CBC + Total CBDV + Delta10-THC + Total THC-O-Acetate, \*Analyte Details above show the Dry Weight Concentrations unless specified as 12% moisture concentration. (mg/ml) = Milligrams per Milliliter, LOQ = Limit of Quantitation, LOD = Limit of Detection, Dilution = Dilution Factor (ppb) = Parts per Billion, (%) = Percent, (cfu/g) = Colony Forming Unit per Gram (cfu/g) = Colony Forming Unit per Gram, LOD = Limit of Detection, (µg/g) = Microgram per Gram (ppm) = Parts per Million, (ppm) = (µg/g), (aw) = aw (area ratio) = Area Ratio, (mg/Kg) = Milligram per Kilogram, \*Measurement of Uncertainty = +/- 10%



This report shall not be reproduced, without written approval, from ACS Laboratory. The results of this report relate only to the material or product analyzed. Test results are confidential unless explicitly waived otherwise. Accredited by a third-party accrediting body as a competent testing laboratory pursuant to ISO/IEC 17025 of the International Organization for Standardization.



DEA No. RA0571996  
FL License # CMTL-0003  
CLIA No. 10D1094068

# Certificate of Analysis

Compliance Test

**White Label Leaf**  
6205 John's Road  
STE 9  
Tampa, Florida 33634

Batch # Power Blend Banana Kush FM-005 Test Reg State: Florida  
Batch Date: 2022-04-25  
Extracted From: Hemp

Order # PUR220425-120001  
Order Date: 2022-04-25  
Sample # AACT213

Sampling Date: 2022-04-26  
Lab Batch Date: 2022-04-26  
Completion Date: 2022-04-29

Initial Gross Weight: 10.415 g



Potency  
Tested

Product Image

Analyte	Dilution (1:n)	LOD (%)	LOQ (%)	Result (mg/g)		Tested (LCUV)
				(mg/g)	(%)	
Delta-8 THC	1000.000	0.000026	0.0015	606.1000	60.6100	
Delta-8 THC-O Acetate	100.000	0.000027	0.0003	105.3000	10.5300	
CBNA	10.000	0.000095	0.0015	4.5620	0.4562	
Delta-9 THC-O Acetate	10.000	0.000077	0.0003	3.8650	0.3865	
CBN	10.000	0.000014	0.0015	3.5590	0.3559	
CBT	10.000	0.0002	0.0015	2.7570	0.2757	
Delta-8 THCV	10.000	0.00004	0.0015	2.5760	0.2576	
CBD	10.000	0.000054	0.0015	0.6160	0.0616	
CBDA	10.000	0.00001	0.0015	0.6130	0.0613	
THCA	10.000	0.000032	0.0015	0.4500	0.0450	
CBC	10.000	0.000018	0.0015	<LOQ	<LOQ	
THCVA	10.000	0.000047	0.0015	<LOQ	<LOQ	
THCV	10.000	0.000007	0.0015	<LOQ	<LOQ	
Exo-THC	10.000	0.00023	0.0015	<LOQ	<LOQ	
CBCA	10.000	0.000107	0.0015	<LOQ	<LOQ	
CBL	10.000	0.000035	0.0015	<LOQ	<LOQ	
CBGA	10.000	0.00008	0.0015	<LOQ	<LOQ	
CBG	10.000	0.000248	0.0015	<LOQ	<LOQ	
CBDVA	10.000	0.000014	0.0015	<LOQ	<LOQ	
CBDV	10.000	0.000065	0.0015	<LOQ	<LOQ	
Delta-9 THC	10.000	0.000013	0.0015	<LOQ	<LOQ	

Potency Summary

<b>Total THC</b> 0.039%	<b>Total CBD</b> 0.115%
<b>Total CBG</b> None Detected	<b>Total CBN</b> 0.756%
<b>Other Cannabinoids</b> 72.060%	<b>Total Cannabinoids</b> 72.971%

Xueli Gao  
Ph.D., DABT  
Lab Toxicologist

Alxia Sun  
D.H.Sc., M.Sc., B.Sc., MT (AAB)  
Lab Director/Principal Scientist



Definitions and Abbreviations used in this report: \*Total CBD = CBD + (CBD-A \* 0.877), \*Total CBDV = CBDV + (CBDVA \* 0.87), \*Total THC = THCA-A \* 0.877 + Delta 9 THC, \*Total THCV = THCV + (THCVA \* 0.87), \*CBG Total = (CBGA \* 0.877) + CBG, \*CBN Total = (CBNA \* 0.877) + CBN, \*Total CBC = CBC + (CBCA \* 0.877), \*Total THC-O-Acetate = Delta 8 THC-O-Acetate + Delta 9 THC-O-Acetate, \*Other Cannabinoids Total = Total Cannabinoids - All the listed cannabinoids on the summary section, \*Total Detected Cannabinoids = Delta8-THC + Delta9-THC + Total CBN + CBT + Delta8-THCV + Total CBG + Total CBD + Total THCV + CBL + Total THC + Total CBC + Total CBDV + Delta10-THC + Total THC-O-Acetate, \*Analyte Details above show the Dry Weight Concentrations unless specified as 12% moisture concentration. (mg/ml) = Milligrams per Milliliter, LOQ = Limit of Quantitation, LOD = Limit of Detection, Dilution = Dilution Factor (ppb) = Parts per Billion, (%) = Percent, (cfu/g) = Colony Forming Unit per Gram (cfu/g) = Colony Forming Unit per Gram, LOD = Limit of Detection, (µg/g) = Microgram per Gram (ppm) = Parts per Million, (ppm) = (µg/g), (aw) = aw (area ratio) = Area Ratio, (mg/Kg) = Milligram per Kilogram, \*Measurement of Uncertainty = +/- 10%

This report shall not be reproduced, without written approval, from ACS Laboratory. The results of this report relate only to the material or product analyzed. Test results are confidential unless explicitly waived otherwise. Accredited by a third-party accrediting body as a competent testing laboratory pursuant to ISO/IEC 17025 of the International Organization for Standardization.



DEA No. RA0571996  
FL License # CMTL-0003  
CLIA No. 10D1094068

# Certificate of Analysis

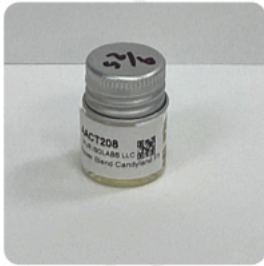
## Compliance Test

**White Label Leaf**  
6205 John's Road  
STE 9  
Tampa, Florida 33634

Batch # Power Blend Candyland FM-005    Test Reg State: Florida  
Batch Date: 2022-04-25  
Extracted From: Hemp

Order # PUR220425-120001  
Order Date: 2022-04-25  
Sample # AACT208

Sampling Date: 2022-04-26    Initial Gross Weight: 8.878 g  
Lab Batch Date: 2022-04-26  
Completion Date: 2022-04-29



Potency  
Tested

Product Image

Analyte	Dilution (1:n)	LOD (%)	LOQ (%)	Result		Tested (LCUV)
				(mg/g)	(%)	
Delta-8 THC	1000.000	0.000026	0.0015	607.7000	60.7700	
Delta-8 THC-O Acetate	100.000	0.000027	0.0003	106.1000	10.6100	
CBNA	10.000	0.000095	0.0015	4.6870	0.4687	
Delta-9 THC-O Acetate	10.000	0.000077	0.0003	3.9960	0.3996	
CBN	10.000	0.000014	0.0015	3.6170	0.3617	
CBT	10.000	0.0002	0.0015	2.9140	0.2914	
Delta-8 THCV	10.000	0.00004	0.0015	2.6620	0.2662	
CBDA	10.000	0.00001	0.0015	0.6360	0.0636	
CBD	10.000	0.000054	0.0015	0.6280	0.0628	
THCA	10.000	0.000032	0.0015	0.4530	0.0453	
CBC	10.000	0.000018	0.0015	<LOQ	<LOQ	
THCVA	10.000	0.000047	0.0015	<LOQ	<LOQ	
THCV	10.000	0.000007	0.0015	<LOQ	<LOQ	
Exo-THC	10.000	0.00023	0.0015	<LOQ	<LOQ	
CBCA	10.000	0.000107	0.0015	<LOQ	<LOQ	
CBL	10.000	0.000035	0.0015	<LOQ	<LOQ	
CBGA	10.000	0.00008	0.0015	<LOQ	<LOQ	
CBG	10.000	0.000248	0.0015	<LOQ	<LOQ	
CBDVA	10.000	0.000014	0.0015	<LOQ	<LOQ	
CBDV	10.000	0.000065	0.0015	<LOQ	<LOQ	
Delta-9 THC	10.000	0.000013	0.0015	<LOQ	<LOQ	

### Potency Summary

<b>Total THC</b> 0.040%	<b>Total CBD</b> 0.119%
<b>Total CBG</b> None Detected	<b>Total CBN</b> 0.773%
<b>Other Cannabinoids</b> 72.337%	<b>Total Cannabinoids</b> 73.268%

Xueli Gao  
Ph.D., DABT    Lab Toxicologist

Aixa Sun    Lab Director/Principal Scientist  
D.H.Sc., M.Sc., B.Sc., MT (AAB)



Definitions and Abbreviations used in this report: \*Total CBD = CBD + (CBD-A \* 0.877), \*Total CBDV = CBDV + (CBDVA \* 0.87), \*Total THC = THCA-A \* 0.877 + Delta 9 THC, \*Total THCV = THCV + (THCVA \* 0.87), \*CBG Total = (CBGA \* 0.877) + CBG, \*CBN Total = (CBNA \* 0.877) + CBN, \*Total CBC = CBC + (CBCA \* 0.877), \*Total THC-O-Acetate = Delta 8 THC-O-Acetate + Delta 9 THC-O-Acetate, \*Other Cannabinoids Total = Total Cannabinoids - All the listed cannabinoids on the summary section, \*Total Detected Cannabinoids = Delta10-THC + Delta8-THC + Total CBN + CBT + Delta8-THCV + Total CBG + Total CBD + Total THCV + CBL + Total THC + Total CBC + Total CBDV + Delta10-THC + Total THC-O-Acetate, \*Analyte Details above show the Dry Weight Concentrations unless specified as 12% moisture concentration. (mg/ml) = Milligrams per Milliliter, LOQ = Limit of Quantitation, LOD = Limit of Detection, Dilution = Dilution Factor (ppb) = Parts per Billion, (%) = Percent, (cfu/g) = Colony Forming Unit per Gram (cfu/g) = Colony Forming Unit per Gram, LOD = Limit of Detection, (µg/g) = Microgram per Gram (ppm) = Parts per Million, (ppm) = (µg/g), (aw) = aw (area ratio) = Area Ratio, (mg/Kg) = Milligram per Kilogram, \*Measurement of Uncertainty = +/- 10%



This report shall not be reproduced, without written approval, from ACS Laboratory. The results of this report relate only to the material or product analyzed. Test results are confidential unless explicitly waived otherwise. Accredited by a third-party accrediting body as a competent testing laboratory pursuant to ISO/IEC 17025 of the International Organization for Standardization.





DEA No. RA0571996  
FL License # CMTL-0003  
CLIA No. 10D1094068

# Certificate of Analysis

Compliance Test

**White Label Leaf**  
6205 John's Road  
STE 9  
Tampa, Florida 33634

Batch # Power Blend Fruit Punch FM-005    Test Reg State: Florida  
Batch Date: 2022-04-25  
Extracted From: Hemp

Order # PUR220425-120001  
Order Date: 2022-04-25  
Sample # AACT212

Sampling Date: 2022-04-26  
Lab Batch Date: 2022-04-26  
Completion Date: 2022-04-29

Initial Gross Weight: 9.195 g



Potency  
Tested

Product Image

Analyte	Dilution (1:n)	LOD (%)	LOQ (%)	Result		Tested (LCUV)
				(mg/g)	(%)	
<b>Potency 21 (LCUV)</b> Specimen Weight: 45.620 mg						
Delta-8 THC	1000.000	0.000026	0.0015	621.9000	62.1900	
Delta-8 THC-O Acetate	100.000	0.000027	0.0003	106.0000	10.6000	
CBNA	10.000	0.000095	0.0015	4.6600	0.4660	
Delta-9 THC-O Acetate	10.000	0.000077	0.0003	3.8920	0.3892	
CBN	10.000	0.000014	0.0015	3.6750	0.3675	
CBT	10.000	0.0002	0.0015	2.8660	0.2866	
Delta-8 THCV	10.000	0.00004	0.0015	2.5950	0.2595	
CBD	10.000	0.000054	0.0015	0.5980	0.0598	
CBDA	10.000	0.00001	0.0015	0.5540	0.0554	
THCA	10.000	0.000032	0.0015	0.4410	0.0441	
CBC	10.000	0.000018	0.0015	<LOQ	<LOQ	
THCVA	10.000	0.000047	0.0015	<LOQ	<LOQ	
THCV	10.000	0.000007	0.0015	<LOQ	<LOQ	
Exo-THC	10.000	0.00023	0.0015	<LOQ	<LOQ	
CBCA	10.000	0.000107	0.0015	<LOQ	<LOQ	
CBL	10.000	0.000035	0.0015	<LOQ	<LOQ	
CBGA	10.000	0.00008	0.0015	<LOQ	<LOQ	
CBG	10.000	0.000248	0.0015	<LOQ	<LOQ	
CBDVA	10.000	0.000014	0.0015	<LOQ	<LOQ	
CBDV	10.000	0.000065	0.0015	<LOQ	<LOQ	
Delta-9 THC	10.000	0.000013	0.0015	<LOQ	<LOQ	

Potency Summary

<b>Total THC</b> 0.039%	<b>Total CBD</b> 0.108%
<b>Total CBG</b> None Detected	<b>Total CBN</b> 0.776%
<b>Other Cannabinoids</b> 73.725%	<b>Total Cannabinoids</b> 74.649%

Xueli Gao  
Ph.D., DABT    Lab Toxicologist

Ailia Sun    Lab Director/Principal Scientist  
D.H.Sc., M.Sc., B.Sc., MT (AAB)



Definitions and Abbreviations used in this report: \*Total CBD = CBD + (CBD-A \* 0.877), \*Total CBDV = CBDV + (CBDVA \* 0.87), \*Total THC = THCA-A \* 0.877 + Delta 9 THC, \*Total THCV = THCV + (THCVA \* 0.87), \*CBG Total = (CBGA \* 0.877) + CBG, \*CBN Total = (CBNA \* 0.877) + CBN, \*Total CBC = CBC + (CBCA \* 0.877), \*Total THC-O-Acetate = Delta 8 THC-O-Acetate + Delta 9 THC-O-Acetate, \*Other Cannabinoids Total = Total Cannabinoids - All the listed cannabinoids on the summary section, \*Total Detected Cannabinoids = Delta10-THC + Delta8-THC + Total CBN + CBT + Delta8-THCV + Total CBG + Total CBD + Total THCV + CBL + Total THC + Total CBC + Total CBDV + Delta10-THC + Total THC-O-Acetate, \*Analyte Details above show the Dry Weight Concentrations unless specified as 12% moisture concentration. (mg/ml) = Milligrams per Milliliter, LOQ = Limit of Quantitation, LOD = Limit of Detection, Dilution = Dilution Factor (ppb) = Parts per Billion, (%) = Percent, (cfu/g) = Colony Forming Unit per Gram (cfu/g) = Colony Forming Unit per Gram, LOD = Limit of Detection, (µg/g) = Microgram per Gram (ppm) = Parts per Million, (ppm) = (µg/g), (aw) = aw (area ratio) = Area Ratio, (mg/Kg) = Milligram per Kilogram, \*Measurement of Uncertainty = +/- 10%



This report shall not be reproduced, without written approval, from ACS Laboratory. The results of this report relate only to the material or product analyzed. Test results are confidential unless explicitly waived otherwise. Accredited by a third-party accrediting body as a competent testing laboratory pursuant to ISO/IEC 17025 of the International Organization for Standardization.



DEA No. RA0571996  
FL License # CMTL-0003  
CLIA No. 10D1094068

# Certificate of Analysis

Compliance Test

**White Label Leaf**  
6205 John's Road  
STE 9  
Tampa, Florida 33634

Batch # Power Blend Fruity Pebbles FM-005 Test Reg State: Florida  
Batch Date: 2022-04-25  
Extracted From: Hemp

Order # PUR220425-120001  
Order Date: 2022-04-25  
Sample # AACT215

Sampling Date: 2022-04-26  
Lab Batch Date: 2022-04-26  
Completion Date: 2022-04-29

Initial Gross Weight: 9.185 g



Potency  
Tested

Product Image

Analyte	Dilution (1:n)	LOD (%)	LOQ (%)	Result		Tested (LCUV)
				(mg/g)	(%)	
Delta-8 THC	1000.000	0.000026	0.0015	607.0000	60.7000	
Delta-8 THC-O Acetate	100.000	0.000027	0.0003	105.6000	10.5600	
CBNA	10.000	0.000095	0.0015	4.5420	0.4542	
Delta-9 THC-O Acetate	10.000	0.000077	0.0003	3.8040	0.3804	
CBN	10.000	0.000014	0.0015	3.5390	0.3539	
CBT	10.000	0.0002	0.0015	2.7640	0.2764	
Delta-8 THCV	10.000	0.00004	0.0015	2.5300	0.2530	
CBD	10.000	0.000054	0.0015	0.5820	0.0582	
CBDA	10.000	0.00001	0.0015	0.5810	0.0581	
THCA	10.000	0.000032	0.0015	0.4420	0.0442	
CBC	10.000	0.000018	0.0015	<LOQ	<LOQ	
THCVA	10.000	0.000047	0.0015	<LOQ	<LOQ	
THCV	10.000	0.000007	0.0015	<LOQ	<LOQ	
Exo-THC	10.000	0.00023	0.0015	<LOQ	<LOQ	
CBCA	10.000	0.000107	0.0015	<LOQ	<LOQ	
CBL	10.000	0.000035	0.0015	<LOQ	<LOQ	
CBGA	10.000	0.00008	0.0015	<LOQ	<LOQ	
CBG	10.000	0.000248	0.0015	<LOQ	<LOQ	
CBDVA	10.000	0.000014	0.0015	<LOQ	<LOQ	
CBDV	10.000	0.000065	0.0015	<LOQ	<LOQ	
Delta-9 THC	10.000	0.000013	0.0015	<LOQ	<LOQ	

Potency Summary

Total THC 0.039%	Total CBD 0.109%
Total CBG None Detected	Total CBN 0.752%
Other Cannabinoids 72.170%	Total Cannabinoids 73.070%

Xueli Gao  
Ph.D., DABT  
Lab Toxicologist

Aixa Sun  
Lab Director/Principal Scientist  
D.H.Sc., M.Sc., B.Sc., MT (AAB)



Definitions and Abbreviations used in this report: \*Total CBD = CBD + (CBD-A \* 0.877), \*Total CBDV = CBDV + (CBDVA \* 0.87), \*Total THC = THCA-A \* 0.877 + Delta 9 THC, \*Total THCV = THCV + (THCVA \* 0.87), \*CBG Total = (CBGA \* 0.877) + CBG, \*CBN Total = (CBNA \* 0.877) + CBN, \*Total CBC = CBC + (CBCA \* 0.877), \*Total THC-O-Acetate = Delta 8 THC-O-Acetate + Delta 9 THC-O-Acetate, \*Other Cannabinoids Total = Total Cannabinoids - All the listed cannabinoids on the summary section, \*Total Detected Cannabinoids = Delta10-THC + Delta8-THC + Total CBN + CBT + Delta8-THCV + Total CBG + Total CBD + Total THCV + CBL + Total THC + Total CBC + Total CBDV + Delta10-THC + Total THC-O-Acetate, \*Analyte Details above show the Dry Weight Concentrations unless specified as 12% moisture concentration. (mg/ml) = Milligrams per Milliliter, LOQ = Limit of Quantitation, LOD = Limit of Detection, Dilution = Dilution Factor (ppb) = Parts per Billion, (%) = Percent, (cfu/g) = Colony Forming Unit per Gram (cfu/g) = Colony Forming Unit per Gram, LOD = Limit of Detection, (ug/g) = Microgram per Gram (ppm) = Parts per Million, (ppm) = (ug/g), (aw) = aw (area ratio) = Area Ratio, (mg/Kg) = Milligram per Kilogram, \*Measurement of Uncertainty = +/- 10%



This report shall not be reproduced, without written approval, from ACS Laboratory. The results of this report relate only to the material or product analyzed. Test results are confidential unless explicitly waived otherwise. Accredited by a third-party accrediting body as a competent testing laboratory pursuant to ISO/IEC 17025 of the International Organization for Standardization.