



DEA No. RA0571996
FL License # CMTL-0003
CLIA No. 10D1094068

Certificate of Analysis

Compliance Test

White Label Leaf
6205 John's Road
STE 9
Tampa, Florida 33634

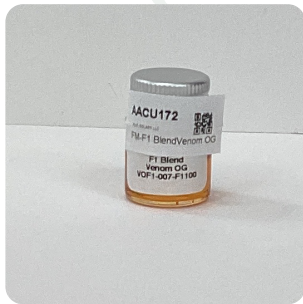
Batch # FM-F1 Blend- Venom OG
Batch Date: 2022-05-04
Extracted From: Hemp

Test Reg State: Florida

Order # PUR220504-050001
Order Date: 2022-05-04
Sample # AACU172

Sampling Date: 2022-05-05
Lab Batch Date: 2022-05-05
Completion Date: 2022-05-10

Initial Gross Weight: 10.552 g



Potency
Tested

HHC
Tested

Product Image

Analyte	Dilution (1:n)	LOD (%)	LOQ (%)	Result (mg/g)		Result (%)
				Result (mg/g)	Result (%)	
Delta-8 THC-O Acetate	100.000	0.000027	0.0003	163.8000	16.3800	16.3800
CBD	100.000	0.000054	0.0015	110.8000	11.0800	11.0800
Delta-8 THC	10.000	0.000026	0.0015	7.2070	0.7207	7.2070
Delta-9 THC-O Acetate	10.000	0.000077	0.0003	3.8010	0.3801	3.8010
CBN	10.000	0.000014	0.0015	2.9500	0.2950	2.9500
THCV	10.000	0.000007	0.0015	1.4060	0.1406	1.4060
THCA	10.000	0.000032	0.0015	<LOQ	<LOQ	<LOQ
THCVA	10.000	0.000047	0.0015	<LOQ	<LOQ	<LOQ
CBC	100.000	0.000018	0.0015	<LOQ	<LOQ	<LOQ
Exo-THC	10.000	0.00023	0.0015	<LOQ	<LOQ	<LOQ
CBCA	10.000	0.000107	0.0015	<LOQ	<LOQ	<LOQ
Delta-8 THCv	10.000	0.00004	0.0015	<LOQ	<LOQ	<LOQ
CBT	10.000	0.0002	0.0015	<LOQ	<LOQ	<LOQ
CBNA	10.000	0.000095	0.0015	<LOQ	<LOQ	<LOQ
CBL	10.000	0.000035	0.0015	<LOQ	<LOQ	<LOQ
CBGA	10.000	0.00008	0.0015	<LOQ	<LOQ	<LOQ
CBG	10.000	0.000248	0.0015	<LOQ	<LOQ	<LOQ
CBDVA	10.000	0.000014	0.0015	<LOQ	<LOQ	<LOQ
CBDV	10.000	0.000065	0.0015	<LOQ	<LOQ	<LOQ
CBDa	10.000	0.00001	0.0015	<LOQ	<LOQ	<LOQ
Delta-9 THC	10.000	0.000013	0.0015	<LOQ	<LOQ	<LOQ

Potency Summary

Total THC None Detected	Total CBD 11.080%
Total CBG None Detected	Total CBN 0.295%
Other Cannabinoids 17.621%	Total Cannabinoids 28.996%

HHC Summary

Analyte	Result (mg/g)	(%)	Total/Unit (mg)
Total HHC	458.97	45.897%	0.00000

Xueli Gao
Ph.D., DABT
Lab Toxicologist

Aixia Sun
D.H.Sc., M.Sc., B.Sc., MT (AAB)
Lab Director/Principal Scientist



Definitions and Abbreviations used in this report: *Total CBD = CBD + (CBD-A * 0.877), *Total CBDV = CBDV + (CBDVA * 0.87), *Total THC = THCA-A * 0.877 + Delta 9 THC, *Total THCV = THCV + (THCVA * 0.87), *CBG Total = (CBGA * 0.877) + CBG, *CBN Total = (CBNA * 0.877) + CBN, *Total CBC = CBC + (CBCA * 0.877), *Total THC-O-Acetate = Delta 8 THC-O-Acetate + Delta 9 THC-O-Acetate, *Other Cannabinoids Total = Total Cannabinoids - All the listed cannabinoids on the summary section, *Total Detected Cannabinoids = Delta6a10a-THC + Delta8-THC + Total CBN + CBT + Delta8-THCV + Total CBG + Total CBD + Total THCV + CBL + Total THC + Total CBC + Total CBDV + Delta10-THC + Total THC-O-Acetate, *Analyte Details above show the Dry Weight Concentrations unless specified as 12% moisture concentration. (mg/ml) = Milligrams per Milliliter, LOQ = Limit of Quantitation, LOD = Limit of Detection, Dilution = Dilution Factor (ppb) = Parts per Billion, (%) = Percent, (cfu/g) = Colony Forming Unit per Gram (cfu/g) = Colony Forming Unit per Gram, LOD = Limit of Detection, (µg/g) = Microgram per Gram (ppm) = Parts per Million, (ppm) = (µg/g), (aw) = aw (area ratio) = Area Ratio, (mg/Kg) = Milligram per Kilogram, *Measurement of Uncertainty = +/- 10%



This report shall not be reproduced, without written approval, from ACS Laboratory. The results of this report relate only to the material or product analyzed. Test results are confidential unless explicitly waived otherwise. Accredited by a third-party accrediting body as a competent testing laboratory pursuant to ISO/IEC 17025 of the International Organization for Standardization.



DEA No. RA0571996
FL License # CMTL-0003
CLIA No. 10D1094068

Certificate of Analysis

Compliance Test

White Label Leaf
6205 John's Road
STE 9
Tampa, Florida 33634

Batch # FM-F1 Blend- Venom OG
Batch Date: 2022-05-04
Extracted From: Hemp

Test Reg State: Florida

Order # PUR220504-050001
Order Date: 2022-05-04
Sample # AACU172

Sampling Date: 2022-05-05
Lab Batch Date: 2022-05-05
Completion Date: 2022-05-10

Initial Gross Weight: 10.552 g

HHC
Specimen Weight: 45.390 mg
Dilution Factor: 1.000

Tested
(LCMS)

Analyte	LOQ (%)	Result (mg/g)	(%)	Analyte	LOQ (%)	Result (mg/g)	(%)
(9R)-HHC	7.5E-5	98.4000	9.84	(±)-9β-hydroxy-HHC	7.5E-5	1.5700	0.157
(9S)-HHC	7.5E-5	359.0000	35.9	Total HHC	7.5E-5	458.9700	45.897

Xueli Gao
Xueli Gao
Ph.D., DABT
Lab Toxicologist

Aixia Sun
Aixia Sun
D.H.Sc., M.Sc., B.Sc., MT (AAB)
Lab Director/Principal Scientist



Definitions and Abbreviations used in this report: *Total CBD = CBD + (CBD-A * 0.877), *Total CBDV = CBDV + (CBDVA * 0.87), *Total THC = THCA-A * 0.877 + Delta 9 THC, *Total THCV = THCV + (THCVA * 0.87), *CBG Total = (CBGA * 0.877) + CBG, *CBN Total = (CBNA * 0.877) + CBN, *Total CBC = CBC + (CBCA * 0.877), *Total THC-O-Acetate = Delta 8 THC-O-Acetate + Delta 9 THC-O-Acetate, *Other Cannabinoids Total = Total Cannabinoids - All the listed cannabinoids on the summary section, *Total Detected Cannabinoids = Delta6a10a-THC + Delta8-THC + Total CBN + CBT + Delta8-THCV + Total CBG + Total CBD + Total THCV + CBL + Total THC + Total CBC + Total CBDV + Delta10-THC + Total THC-O-Acetate, *Analyte Details above show the Dry Weight Concentrations unless specified as 12% moisture concentration. (mg/ml) = Milligrams per Milliliter, LOQ = Limit of Quantitation, LOD = Limit of Detection, Dilution = Dilution Factor (ppb) = Parts per Billion, (%) = Percent, (cfu/g) = Colony Forming Unit per Gram (cfu/g) = Colony Forming Unit per Gram, LOD = Limit of Detection, (µg/g) = Microgram per Gram (ppm) = Parts per Million, (ppm) = (µg/g), (aw) = aw (area ratio) = Area Ratio, (mg/Kg) = Milligram per Kilogram, *Measurement of Uncertainty = +/- 10%

This report shall not be reproduced, without written approval, from ACS Laboratory. The results of this report relate only to the material or product analyzed. Test results are confidential unless explicitly waived otherwise. Accredited by a third-party accrediting body as a competent testing laboratory pursuant to ISO/IEC 17025 of the International Organization for Standardization.



DEA No. RA0571996
FL License # CMTL-0003
CLIA No. 10D1094068

Certificate of Analysis

Compliance Test

White Label Leaf
6205 John's Road
STE 9
Tampa, Florida 33634

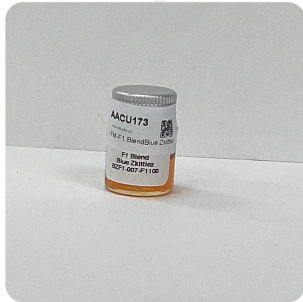
Batch # FM-F1 Blend- Blue Skittlez
Batch Date: 2022-05-04
Extracted From: Hemp

Test Reg State: Florida

Order # PUR220504-050001
Order Date: 2022-05-04
Sample # AACU173

Sampling Date: 2022-05-05
Lab Batch Date: 2022-05-05
Completion Date: 2022-05-10

Initial Gross Weight: 10.417 g



Product Image

Potency
Tested

HHC
Tested

Analyte	Dilution (1:n)	LOD (%)	LOQ (%)	Result (mg/g)	(%)
Delta-8 THC-O Acetate	1000.000	0.000027	0.0003	175.3000	17.5300
CBD	1000.000	0.000054	0.0015	115.2000	11.5200
Delta-8 THC	10.000	0.000026	0.0015	7.2280	0.7228
Delta-9 THC-O Acetate	10.000	0.000077	0.0003	3.7460	0.3746
CBN	10.000	0.000014	0.0015	2.9440	0.2944
THCV	10.000	0.000007	0.0015	1.3930	0.1393
THCA	10.000	0.000032	0.0015	<LOQ	<LOQ
THCVA	10.000	0.000047	0.0015	<LOQ	<LOQ
CBC	100.000	0.000018	0.0015	<LOQ	<LOQ
Exo-THC	10.000	0.00023	0.0015	<LOQ	<LOQ
CBCA	10.000	0.000107	0.0015	<LOQ	<LOQ
Delta-8 THCv	10.000	0.00004	0.0015	<LOQ	<LOQ
CBT	10.000	0.0002	0.0015	<LOQ	<LOQ
CBNA	10.000	0.000095	0.0015	<LOQ	<LOQ
CBL	10.000	0.000035	0.0015	<LOQ	<LOQ
CBGA	10.000	0.00008	0.0015	<LOQ	<LOQ
CBG	10.000	0.000248	0.0015	<LOQ	<LOQ
CBDVA	10.000	0.000014	0.0015	<LOQ	<LOQ
CBDV	10.000	0.000065	0.0015	<LOQ	<LOQ
CBDa	10.000	0.00001	0.0015	<LOQ	<LOQ
Delta-9 THC	10.000	0.000013	0.0015	<LOQ	<LOQ

Potency Summary

Total THC None Detected	Total CBD 11.5200%
Total CBG None Detected	Total CBN 0.294%
Other Cannabinoids 18.767%	Total Cannabinoids 30.581%

HHC Summary

Analyte	Result (mg/g)	(%)	Total/Unit (mg)
Total HHC	412.6	41.26%	0.00000

Xueli Gao
Ph.D., DABT
Lab Toxicologist

Aixia Sun
D.H.Sc., M.Sc., B.Sc., MT (AAB)
Lab Director/Principal Scientist



Definitions and Abbreviations used in this report: *Total CBD = CBD + (CBD-A * 0.877), *Total CBDV = CBDV + (CBDVA * 0.87), *Total THC = THCA-A * 0.877 + Delta 9 THC, *Total THCV = THCV + (THCVA * 0.87), *CBG Total = (CBGA * 0.877) + CBG, *CBN Total = (CBNA * 0.877) + CBN, *Total CBC = CBC + (CBCA * 0.877), *Total THC-O-Acetate = Delta 8 THC-O-Acetate + Delta 9 THC-O-Acetate, *Other Cannabinoids Total = Total Cannabinoids - All the listed cannabinoids on the summary section, *Total Detected Cannabinoids = Delta6a10a-THC + Delta8-THC + Total CBN + CBT + Delta8-THCV + Total CBG + Total CBD + Total THCV + CBL + Total THC + Total CBC + Total CBDV + Delta10-THC + Total THC-O-Acetate, *Analyte Details above show the Dry Weight Concentrations unless specified as 12% moisture concentration. (mg/ml) = Milligrams per Milliliter, LOQ = Limit of Quantitation, LOD = Limit of Detection, Dilution = Dilution Factor (ppb) = Parts per Billion, (%) = Percent, (cfu/g) = Colony Forming Unit per Gram (cfu/g) = Colony Forming Unit per Gram, , LOD = Limit of Detection, (µg/g) = Microgram per Gram (ppm) = Parts per Million, (ppm) = (µg/g), (aw) = aw (area ratio) = Area Ratio, (mg/Kg) = Milligram per Kilogram, *Measurement of Uncertainty = +/- 10%

This report shall not be reproduced, without written approval, from ACS Laboratory. The results of this report relate only to the material or product analyzed. Test results are confidential unless explicitly waived otherwise. Accredited by a third-party accrediting body as a competent testing laboratory pursuant to ISO/IEC 17025 of the International Organization for Standardization.



DEA No. RA0571996
FL License # CMTL-0003
CLIA No. 10D1094068

Certificate of Analysis

Compliance Test

White Label Leaf
6205 John's Road
STE 9
Tampa, Florida 33634

Batch # FM-F1 Blend- Blue Skittlez
Batch Date: 2022-05-04
Extracted From: Hemp

Test Reg State: Florida

Order # PUR220504-050001
Order Date: 2022-05-04
Sample # AACU173

Sampling Date: 2022-05-05
Lab Batch Date: 2022-05-05
Completion Date: 2022-05-10

Initial Gross Weight: 10.417 g

HHC
Specimen Weight: 51.490 mg
Dilution Factor: 1.000

Tested
(LCMS)

Analyte	LOQ (%)	Result (mg/g)	(%)	Analyte	LOQ (%)	Result (mg/g)	(%)
(9R)-HHC	7.5E-5	92.1000	9.21	(±)-9β-hydroxy-HHC	7.5E-5	1.5000	0.15
(9S)-HHC	7.5E-5	319.0000	31.9	Total HHC	7.5E-5	412.6000	41.26

Xueli Gao
Xueli Gao
Ph.D., DABT
Lab Toxicologist

Aixia Sun
Aixia Sun
D.H.Sc., M.Sc., B.Sc., MT (AAB)
Lab Director/Principal Scientist



Definitions and Abbreviations used in this report: *Total CBD = CBD + (CBD-A * 0.877), *Total CBDV = CBDV + (CBDVA * 0.87), *Total THC = THCA-A * 0.877 + Delta 9 THC, *Total THCV = THCV + (THCVA * 0.87), *CBG Total = (CBGA * 0.877) + CBG, *CBN Total = (CBNA * 0.877) + CBN, *Total CBC = CBC + (CBCA * 0.877), *Total THC-O-Acetate = Delta 8 THC-O-Acetate + Delta 9 THC-O-Acetate, *Other Cannabinoids Total = Total Cannabinoids - All the listed cannabinoids on the summary section, *Total Detected Cannabinoids = Delta6a10a-THC + Delta8-THC + Total CBN + CBT + Delta8-THCV + Total CBG + Total CBD + Total THCV + CBL + Total THC + Total CBC + Total CBDV + Delta10-THC + Total THC-O-Acetate, *Analyte Details above show the Dry Weight Concentrations unless specified as 12% moisture concentration. (mg/ml) = Milligrams per Milliliter, LOQ = Limit of Quantitation, LOD = Limit of Detection, Dilution = Dilution Factor (ppb) = Parts per Billion, (%) = Percent, (cfu/g) = Colony Forming Unit per Gram (cfu/g) = Colony Forming Unit per Gram, LOD = Limit of Detection, (µg/g) = Microgram per Gram (ppm) = Parts per Million, (ppm) = (µg/g), (aw) = aw (area ratio) = Area Ratio, (mg/Kg) = Milligram per Kilogram, *Measurement of Uncertainty = +/- 10%

This report shall not be reproduced, without written approval, from ACS Laboratory. The results of this report relate only to the material or product analyzed. Test results are confidential unless explicitly waived otherwise. Accredited by a third-party accrediting body as a competent testing laboratory pursuant to ISO/IEC 17025 of the International Organization for Standardization.



DEA No. RA0571996
FL License # CMTL-0003
CLIA No. 10D1094068

Certificate of Analysis

Compliance Test

White Label Leaf
6205 John's Road
STE 9
Tampa, Florida 33634

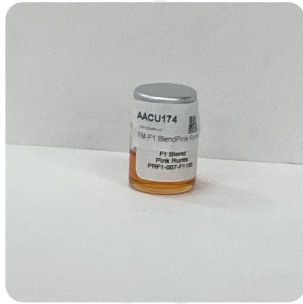
Batch # FM-F1 Blend- Pink Runts
Batch Date: 2022-05-04
Extracted From: Hemp

Test Reg State: Florida

Order # PUR220504-050001
Order Date: 2022-05-04
Sample # AACU174

Sampling Date: 2022-05-05
Lab Batch Date: 2022-05-05
Completion Date: 2022-05-10

Initial Gross Weight: 10.267 g



Potency
Tested

HHC
Tested

Product Image

Potency 21 (LCUV)
Specimen Weight: 49.460 mg

Analyte	Dilution (1:n)	LOD (%)	LOQ (%)	Result (mg/g)	(%)
Delta-8 THC-O Acetate	1000.000	0.000027	0.0003	173.1000	17.3100
CBD	1000.000	0.000054	0.0015	114.5000	11.4500
Delta-8 THC	10.000	0.000026	0.0015	7.1540	0.7154
Delta-9 THC-O Acetate	10.000	0.000077	0.0003	3.7270	0.3727
CBN	10.000	0.000014	0.0015	2.9660	0.2966
THCV	10.000	0.000007	0.0015	1.3770	0.1377
THCA	10.000	0.000032	0.0015	<LOQ	<LOQ
THCVA	10.000	0.000047	0.0015	<LOQ	<LOQ
CBC	100.000	0.000018	0.0015	<LOQ	<LOQ
Exo-THC	10.000	0.00023	0.0015	<LOQ	<LOQ
CBCA	10.000	0.000107	0.0015	<LOQ	<LOQ
Delta-8 THCV	10.000	0.00004	0.0015	<LOQ	<LOQ
CBT	10.000	0.0002	0.0015	<LOQ	<LOQ
CBNA	10.000	0.000095	0.0015	<LOQ	<LOQ
CBL	10.000	0.000035	0.0015	<LOQ	<LOQ
CBGA	10.000	0.00008	0.0015	<LOQ	<LOQ
CBG	10.000	0.000248	0.0015	<LOQ	<LOQ
CBDVA	10.000	0.000014	0.0015	<LOQ	<LOQ
CBDV	10.000	0.000065	0.0015	<LOQ	<LOQ
CBDA	10.000	0.00001	0.0015	<LOQ	<LOQ
Delta-9 THC	10.000	0.000013	0.0015	<LOQ	<LOQ

Tested (LCUV)

Potency Summary

Total THC None Detected	Total CBD 11.450%
Total CBG None Detected	Total CBN 0.297%
Other Cannabinoids 18.536%	Total Cannabinoids 30.282%

HHC Summary

Analyte	Result (mg/g)	(%)	Total/Unit (mg)
Total HHC	409.16	40.916%	0.00000

Xueli Gao
Ph.D., DABT
Lab Toxicologist

Aixia Sun
D.H.Sc., M.Sc., B.Sc., MT (AAB)
Lab Director/Principal Scientist



Definitions and Abbreviations used in this report: *Total CBD = CBD + (CBD-A * 0.877), *Total CBDV = CBDV + (CBDVA * 0.87), *Total THC = THCA-A * 0.877 + Delta 9 THC, *Total THCV = THCV + (THCVA * 0.87), *CBG Total = (CBGA * 0.877) + CBG, *CBN Total = (CBNA * 0.877) + CBN, *Total CBC = CBC + (CBCA * 0.877), *Total THC-O-Acetate = Delta 8 THC-O-Acetate + Delta 9 THC-O-Acetate, *Other Cannabinoids Total = Total Cannabinoids - All the listed cannabinoids on the summary section, *Total Detected Cannabinoids = Delta6a10a-THC + Delta8-THC + Total CBN + CBT + Delta8-THCV + Total CBG + Total CBD + Total THCV + CBL + Total THC + Total CBC + Total CBDV + Delta10-THC + Total THC-O-Acetate, *Analyte Details above show the Dry Weight Concentrations unless specified as 12% moisture concentration. (mg/ml) = Milligrams per Milliliter, LOQ = Limit of Quantitation, LOD = Limit of Detection, Dilution = Dilution Factor (ppb) = Parts per Billion, (%) = Percent, (cfu/g) = Colony Forming Unit per Gram (cfu/g) = Colony Forming Unit per Gram, , LOD = Limit of Detection, (µg/g) = Microgram per Gram (ppm) = Parts per Million, (ppm) = (µg/g), (aw) = aw (area ratio) = Area Ratio, (mg/Kg) = Milligram per Kilogram, *Measurement of Uncertainty = +/- 10%

This report shall not be reproduced, without written approval, from ACS Laboratory. The results of this report relate only to the material or product analyzed. Test results are confidential unless explicitly waived otherwise. Accredited by a third-party accrediting body as a competent testing laboratory pursuant to ISO/IEC 17025 of the International Organization for Standardization.



DEA No. RA0571996
FL License # CMTL-0003
CLIA No. 10D1094068

Certificate of Analysis

Compliance Test

White Label Leaf
6205 John's Road
STE 9
Tampa, Florida 33634

Batch # FM-F1 Blend- Pink Runts
Batch Date: 2022-05-04
Extracted From: Hemp

Test Reg State: Florida

Order # PUR220504-050001
Order Date: 2022-05-04
Sample # AACU174

Sampling Date: 2022-05-05
Lab Batch Date: 2022-05-05
Completion Date: 2022-05-10

Initial Gross Weight: 10.267 g

HHC
Specimen Weight: 49.460 mg
Dilution Factor: 1.000

Tested
(LCMS)

Analyte	LOQ (%)	Result (mg/g)	(%)	Analyte	LOQ (%)	Result (mg/g)	(%)
(9R)-HHC	7.5E-5	96.6000	9.66	(±)-9β-hydroxy-HHC	7.5E-5	1.5600	0.156
(9S)-HHC	7.5E-5	311.0000	31.1	Total HHC	7.5E-5	409.1600	40.916

Xueli Gao
Xueli Gao
Ph.D., DABT
Lab Toxicologist

Aixia Sun
Aixia Sun
D.H.Sc., M.Sc., B.Sc., MT (AAB)
Lab Director/Principal Scientist



Definitions and Abbreviations used in this report: *Total CBD = CBD + (CBD-A * 0.877), *Total CBDV = CBDV + (CBDVA * 0.87), *Total THC = THCA-A * 0.877 + Delta 9 THC, *Total THCV = THCV + (THCVA * 0.87), *CBG Total = (CBGA * 0.877) + CBG, *CBN Total = (CBNA * 0.877) + CBN, *Total CBC = CBC + (CBCA * 0.877), *Total THC-O-Acetate = Delta 8 THC-O-Acetate + Delta 9 THC-O-Acetate, *Other Cannabinoids Total = Total Cannabinoids - All the listed cannabinoids on the summary section, *Total Detected Cannabinoids = Delta6a10a-THC + Delta8-THC + Total CBN + CBT + Delta8-THCV + Total CBG + Total CBD + Total THCV + CBL + Total THC + Total CBC + Total CBDV + Delta10-THC + Total THC-O-Acetate, *Analyte Details above show the Dry Weight Concentrations unless specified as 12% moisture concentration. (mg/ml) = Milligrams per Milliliter, LOQ = Limit of Quantitation, LOD = Limit of Detection, Dilution = Dilution Factor (ppb) = Parts per Billion, (%) = Percent, (cfu/g) = Colony Forming Unit per Gram (cfu/g) = Colony Forming Unit per Gram, LOD = Limit of Detection, (µg/g) = Microgram per Gram (ppm) = Parts per Million, (ppm) = (µg/g), (aw) = aw (area ratio) = Area Ratio, (mg/Kg) = Milligram per Kilogram, *Measurement of Uncertainty = +/- 10%

This report shall not be reproduced, without written approval, from ACS Laboratory. The results of this report relate only to the material or product analyzed. Test results are confidential unless explicitly waived otherwise. Accredited by a third-party accrediting body as a competent testing laboratory pursuant to ISO/IEC 17025 of the International Organization for Standardization.



DEA No. RA0571996
FL License # CMTL-0003
CLIA No. 10D1094068

Certificate of Analysis

Compliance Test

White Label Leaf
6205 John's Road
STE 9
Tampa, Florida 33634

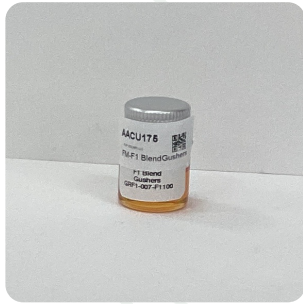
Batch # FM-F1 Blend- Gushers
Batch Date: 2022-05-04
Extracted From: Hemp

Test Reg State: Florida

Order # PUR220504-050001
Order Date: 2022-05-04
Sample # AACU175

Sampling Date: 2022-05-05
Lab Batch Date: 2022-05-05
Completion Date: 2022-05-10

Initial Gross Weight: 10.260 g



Potency
Tested

HHC
Tested

Product Image

Analyte	Dilution (1:n)	LOD (%)	LOQ (%)	Result (mg/g)	(%)
Delta-8 THC-O Acetate	1000.000	0.000027	0.0003	171.6000	17.1600
CBD	1000.000	0.000054	0.0015	114.6000	11.4600
Delta-8 THC	10.000	0.000026	0.0015	7.1000	0.7100
Delta-9 THC-O Acetate	10.000	0.000077	0.0003	3.7080	0.3708
CBN	10.000	0.000014	0.0015	2.8870	0.2887
THCV	10.000	0.000007	0.0015	1.3610	0.1361
THCA	10.000	0.000032	0.0015	<LOQ	<LOQ
THCVA	10.000	0.000047	0.0015	<LOQ	<LOQ
CBC	100.000	0.000018	0.0015	<LOQ	<LOQ
Exo-THC	10.000	0.00023	0.0015	<LOQ	<LOQ
CBCA	10.000	0.000107	0.0015	<LOQ	<LOQ
Delta-8 THCV	10.000	0.00004	0.0015	<LOQ	<LOQ
CBT	10.000	0.0002	0.0015	<LOQ	<LOQ
CBNA	10.000	0.000095	0.0015	<LOQ	<LOQ
CBL	10.000	0.000035	0.0015	<LOQ	<LOQ
CBGA	10.000	0.00008	0.0015	<LOQ	<LOQ
CBG	10.000	0.000248	0.0015	<LOQ	<LOQ
CBDVA	10.000	0.000014	0.0015	<LOQ	<LOQ
CBDV	10.000	0.000065	0.0015	<LOQ	<LOQ
CBDa	10.000	0.00001	0.0015	<LOQ	<LOQ
Delta-9 THC	10.000	0.000013	0.0015	<LOQ	<LOQ

Potency 21 (LCUV)

Specimen Weight: 53.400 mg

Tested (LCUV)

Potency Summary

Total THC None Detected	Total CBD 11.460%
Total CBG None Detected	Total CBN 0.289%
Other Cannabinoids 18.377%	Total Cannabinoids 30.126%

HHC Summary

Analyte	Result (mg/g)	(%)	Total/Unit (mg)
Total HHC	393.1	39.31%	0.00000

Xueli Gao
Ph.D., DABT
Lab Toxicologist

Aixia Sun
D.H.Sc., M.Sc., B.Sc., MT (AAB)
Lab Director/Principal Scientist



Definitions and Abbreviations used in this report: *Total CBD = CBD + (CBD-A * 0.877), *Total CBDV = CBDV + (CBDVA * 0.87), *Total THC = THCA-A * 0.877 + Delta 9 THC, *Total THCV = THCV + (THCVA * 0.87), *CBG Total = (CBGA * 0.877) + CBG, *CBN Total = (CBNA * 0.877) + CBN, *Total CBC = CBC + (CBCA * 0.877), *Total THC-O-Acetate = Delta 8 THC-O-Acetate + Delta 9 THC-O-Acetate, *Other Cannabinoids Total = Total Cannabinoids - All the listed cannabinoids on the summary section, *Total Detected Cannabinoids = Delta6a10a-THC + Delta8-THC + Total CBN + CBT + Delta8-THCV + Total CBG + Total CBD + Total THCV + CBL + Total THC + Total CBC + Total CBDV + Delta10-THC + Total THC-O-Acetate, *Analyte Details above show the Dry Weight Concentrations unless specified as 12% moisture concentration. (mg/ml) = Milligrams per Milliliter, LOQ = Limit of Quantitation, LOD = Limit of Detection, Dilution = Dilution Factor (ppb) = Parts per Billion, (%) = Percent, (cfu/g) = Colony Forming Unit per Gram (cfu/g) = Colony Forming Unit per Gram, LOD = Limit of Detection, (µg/g) = Microgram per Gram (ppm) = Parts per Million, (ppm) = (µg/g), (aw) = aw (area ratio) = Area Ratio, (mg/Kg) = Milligram per Kilogram, *Measurement of Uncertainty = +/- 10%



This report shall not be reproduced, without written approval, from ACS Laboratory. The results of this report relate only to the material or product analyzed. Test results are confidential unless explicitly waived otherwise. Accredited by a third-party accrediting body as a competent testing laboratory pursuant to ISO/IEC 17025 of the International Organization for Standardization.



DEA No. RA0571996
FL License # CMTL-0003
CLIA No. 10D1094068

Certificate of Analysis

Compliance Test

White Label Leaf
6205 John's Road
STE 9
Tampa, Florida 33634

Batch # FM-F1 Blend- Gushers
Batch Date: 2022-05-04
Extracted From: Hemp

Test Reg State: Florida

Order # PUR220504-050001
Order Date: 2022-05-04
Sample # AACU175

Sampling Date: 2022-05-05
Lab Batch Date: 2022-05-05
Completion Date: 2022-05-10

Initial Gross Weight: 10.260 g

HHC
Specimen Weight: 53.400 mg
Dilution Factor: 1.000

Tested
(LCMS)

Analyte	LOQ (%)	Result (mg/g)	(%)	Analyte	LOQ (%)	Result (mg/g)	(%)
(9R)-HHC	7.5E-5	92.6000	9.26	(±)-9β-hydroxy-HHC	7.5E-5	1.5000	0.15
(9S)-HHC	7.5E-5	299.0000	29.9	Total HHC	7.5E-5	393.1000	39.31

Xueli Gao
Xueli Gao
Ph.D., DABT
Lab Toxicologist

Aixia Sun
Aixia Sun
D.H.Sc., M.Sc., B.Sc., MT (AAB)
Lab Director/Principal Scientist



Definitions and Abbreviations used in this report: *Total CBD = CBD + (CBD-A * 0.877), *Total CBDV = CBDV + (CBDVA * 0.87), *Total THC = THCA-A * 0.877 + Delta 9 THC, *Total THCV = THCV + (THCVA * 0.87), *CBG Total = (CBGA * 0.877) + CBG, *CBN Total = (CBNA * 0.877) + CBN, *Total CBC = CBC + (CBCA * 0.877), *Total THC-O-Acetate = Delta 8 THC-O-Acetate + Delta 9 THC-O-Acetate, *Other Cannabinoids Total = Total Cannabinoids - All the listed cannabinoids on the summary section, *Total Detected Cannabinoids = Delta6a10a-THC + Delta8-THC + Total CBN + CBT + Delta8-THCV + Total CBG + Total CBD + Total THCV + CBL + Total THC + Total CBC + Total CBDV + Delta10-THC + Total THC-O-Acetate, *Analyte Details above show the Dry Weight Concentrations unless specified as 12% moisture concentration. (mg/ml) = Milligrams per Milliliter, LOQ = Limit of Quantitation, LOD = Limit of Detection, Dilution = Dilution Factor (ppb) = Parts per Billion, (%) = Percent, (cfu/g) = Colony Forming Unit per Gram (cfu/g) = Colony Forming Unit per Gram, LOD = Limit of Detection, (µg/g) = Microgram per Gram (ppm) = Parts per Million, (ppm) = (µg/g), (aw) = aw (area ratio) = Area Ratio, (mg/Kg) = Milligram per Kilogram, *Measurement of Uncertainty = +/- 10%

This report shall not be reproduced, without written approval, from ACS Laboratory. The results of this report relate only to the material or product analyzed. Test results are confidential unless explicitly waived otherwise. Accredited by a third-party accrediting body as a competent testing laboratory pursuant to ISO/IEC 17025 of the International Organization for Standardization.



DEA No. RA0571996
 FL License # CMTL-0003
 CLIA No. 10D1094068

Certificate of Analysis

Compliance Test

White Label Leaf
 6205 John's Road
 STE 9
 Tampa, Florida 33634

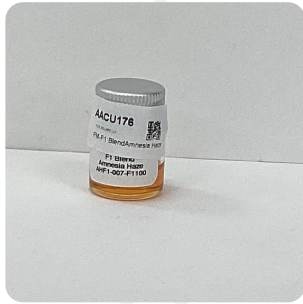
Batch # FM-F1 Blend- Amnesia Haze
 Batch Date: 2022-05-04
 Extracted From: Hemp

Test Reg State: Florida

Order # PUR220504-050001
 Order Date: 2022-05-04
 Sample # AACU176

Sampling Date: 2022-05-05
 Lab Batch Date: 2022-05-05
 Completion Date: 2022-05-10

Initial Gross Weight: 9.531 g



Potency Tested

HHC Tested

Product Image

Analyte	Dilution (1:n)	LOD (%)	LOQ (%)	Result (mg/g)	(%)
Delta-8 THC-O Acetate	1000.000	0.000027	0.0003	176.1000	17.6100
CBD	1000.000	0.000054	0.0015	114.9000	11.4900
Delta-8 THC	10.000	0.000026	0.0015	6.9900	0.6990
Delta-9 THC-O Acetate	10.000	0.000077	0.0003	3.7730	0.3773
CBN	10.000	0.000014	0.0015	2.9730	0.2973
THCV	10.000	0.000007	0.0015	1.3580	0.1358
THCA	10.000	0.000032	0.0015	<LOQ	<LOQ
THCVA	10.000	0.000047	0.0015	<LOQ	<LOQ
CBC	100.000	0.000018	0.0015	<LOQ	<LOQ
Exo-THC	10.000	0.00023	0.0015	<LOQ	<LOQ
CBCA	10.000	0.000107	0.0015	<LOQ	<LOQ
Delta-8 THCV	10.000	0.00004	0.0015	<LOQ	<LOQ
CBT	10.000	0.0002	0.0015	<LOQ	<LOQ
CBNA	10.000	0.000095	0.0015	<LOQ	<LOQ
CBL	10.000	0.000035	0.0015	<LOQ	<LOQ
CBGA	10.000	0.00008	0.0015	<LOQ	<LOQ
CBG	10.000	0.000248	0.0015	<LOQ	<LOQ
CBDVA	10.000	0.000014	0.0015	<LOQ	<LOQ
CBDV	10.000	0.000065	0.0015	<LOQ	<LOQ
CBDa	10.000	0.00001	0.0015	<LOQ	<LOQ
Delta-9 THC	10.000	0.000013	0.0015	<LOQ	<LOQ

Potency Summary

Total THC None Detected	Total CBD 11.490%
Total CBG None Detected	Total CBN 0.297%
Other Cannabinoids 18.822%	Total Cannabinoids 30.609%

HHC Summary

Analyte	Result (mg/g)	(%)	Total/Unit (mg)
Total HHC	456.56	45.656%	0.00000

Xueli Gao
 Ph.D., DABT
 Lab Toxicologist

Aixia Sun
 D.H.Sc., M.Sc., B.Sc., MT (AAB)
 Lab Director/Principal Scientist



Definitions and Abbreviations used in this report: *Total CBD = CBD + (CBD-A * 0.877), *Total CBDV = CBDV + (CBDVA * 0.87), *Total THC = THCA-A * 0.877 + Delta 9 THC, *Total THCV = THCV + (THCVA * 0.87), *CBG Total = (CBGA * 0.877) + CBG, *CBN Total = (CBNA * 0.877) + CBN, *Total CBC = CBC + (CBCA * 0.877), *Total THC-O-Acetate = Delta 8 THC-O-Acetate + Delta 9 THC-O-Acetate, *Other Cannabinoids Total = Total Cannabinoids - All the listed cannabinoids on the summary section, *Total Detected Cannabinoids = Delta6a10a-THC + Delta8-THC + Total CBN + CBT + Delta8-THCV + Total CBG + Total CBD + Total THCV + CBL + Total THC + Total CBC + Total CBDV + Delta10-THC + Total THC-O-Acetate, *Analyte Details above show the Dry Weight Concentrations unless specified as 12% moisture concentration. (mg/ml) = Milligrams per Milliliter, LOQ = Limit of Quantitation, LOD = Limit of Detection, Dilution = Dilution Factor (ppb) = Parts per Billion, (%) = Percent, (cfu/g) = Colony Forming Unit per Gram (cfu/g) = Colony Forming Unit per Gram, LOD = Limit of Detection, (µg/g) = Microgram per Gram (ppm) = Parts per Million, (ppm) = (µg/g), (aw) = aw (area ratio) = Area Ratio, (mg/Kg) = Milligram per Kilogram, *Measurement of Uncertainty = +/- 10%

This report shall not be reproduced, without written approval, from ACS Laboratory. The results of this report relate only to the material or product analyzed. Test results are confidential unless explicitly waived otherwise. Accredited by a third-party accrediting body as a competent testing laboratory pursuant to ISO/IEC 17025 of the International Organization for Standardization.



DEA No. RA0571996
FL License # CMTL-0003
CLIA No. 10D1094068

Certificate of Analysis

Compliance Test

White Label Leaf
6205 John's Road
STE 9
Tampa, Florida 33634

Batch # FM-F1 Blend- Amnesia Haze Test Reg State: Florida
Batch Date: 2022-05-04
Extracted From: Hemp

Order # PUR220504-050001
Order Date: 2022-05-04
Sample # AACU176

Sampling Date: 2022-05-05 Initial Gross Weight: 9.531 g
Lab Batch Date: 2022-05-05
Completion Date: 2022-05-10

HHC
Specimen Weight: 51.050 mg
Dilution Factor: 1.000

Tested
(LCMS)

Analyte	LOQ (%)	Result (mg/g)	(%)	Analyte	LOQ (%)	Result (mg/g)	(%)
(9R)-HHC	7.5E-5	104.0000	10.4	(±)-9β-hydroxy-HHC	7.5E-5	1.5600	0.156
(9S)-HHC	7.5E-5	351.0000	35.1	Total HHC	7.5E-5	456.5600	45.656

Xueli Gao
Xueli Gao Lab Toxicologist
Ph.D., DABT

Aixia Sun
Aixia Sun Lab Director/Principal Scientist
D.H.Sc., M.Sc., B.Sc., MT (AAB)



Definitions and Abbreviations used in this report: *Total CBD = CBD + (CBD-A * 0.877), *Total CBDV = CBDV + (CBDVA * 0.87), *Total THC = THCA-A * 0.877 + Delta 9 THC, *Total THCV = THCV + (THCVA * 0.87), *CBG Total = (CBGA * 0.877) + CBG, *CBN Total = (CBNA * 0.877) + CBN, *Total CBC = CBC + (CBCA * 0.877), *Total THC-O-Acetate = Delta 8 THC-O-Acetate + Delta 9 THC-O-Acetate, *Other Cannabinoids Total = Total Cannabinoids - All the listed cannabinoids on the summary section, *Total Detected Cannabinoids = Delta6a10a-THC + Delta8-THC + Total CBN + CBT + Delta8-THCV + Total CBG + Total CBD + Total THCV + CBL + Total THC + Total CBC + Total CBDV + Delta10-THC + Total THC-O-Acetate, *Analyte Details above show the Dry Weight Concentrations unless specified as 12% moisture concentration. (mg/ml) = Milligrams per Milliliter, LOQ = Limit of Quantitation, LOD = Limit of Detection, Dilution = Dilution Factor (ppb) = Parts per Billion, (%) = Percent, (cfu/g) = Colony Forming Unit per Gram (cfu/g) = Colony Forming Unit per Gram, LOD = Limit of Detection, (µg/g) = Microgram per Gram (ppm) = Parts per Million, (ppm) = (µg/g), (aw) = aw (area ratio) = Area Ratio, (mg/Kg) = Milligram per Kilogram, *Measurement of Uncertainty = +/- 10%

This report shall not be reproduced, without written approval, from ACS Laboratory. The results of this report relate only to the material or product analyzed. Test results are confidential unless explicitly waived otherwise. Accredited by a third-party accrediting body as a competent testing laboratory pursuant to ISO/IEC 17025 of the International Organization for Standardization.