

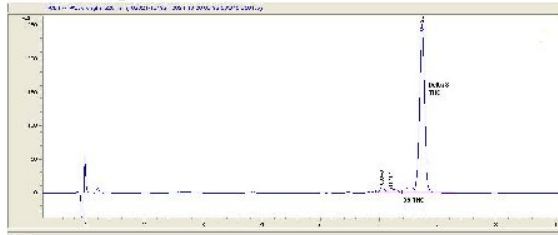


Herbal Pharm Rx.
 hprx.compliance@gmail.com
 719-242-5810

Sample 372-102021-012
 D8-THC Strawberry Banana Vape
 Sample Submitted: 10-20-2021; Report Date: 10-21-2021

D8-THC Strawberry Banana Vape
 Distillate

Chromatogram



Cannabinoid Profile



Cannabinoid Profile by HPLC

0.29%
 Calculated THC Yield

0.00%
 Calculated CBD Yield

92.90%
 Total Cannabinoids

Cannabinoid	% wt	mg/g
Delta-8-THC	92.61	926.1
THC	0.29	2.9
Total Cannabinoids	92.90	929.0
Calculated THC Yield	0.29	2.90
Calculated CBD Yield	0.00	0.00

Calculated Maximum THC Yield = THC + 0.877 * THCA
 Calculated Maximum CBD Yield = CBD + 0.877 * CBDA

Marin Analytics, LLC
 250 Bel Marin Keys Blvd, Suite D4
 Novato, CA 94949
 415-936-6477 / sarabiancalana1@gmail.com

Sara Biancalana
Sara Biancalana
 Chief Scientist

This sample has been tested by Marin Analytics, LLC using valid testing methodologies and a quality system. Values reported relate only to the sample tested. Marin Analytics, LLC makes no claims as to the efficacy, safety or other risks associated with any detected or non-detected levels of any compounds reported herein. This Certificate shall not be reproduced except in full, without the written approval of Marin Analytics, LLC.



Herbal Pharm Rx.
 hprx.compliance@gmail.com
 719-242-5810

Sample 372-102021-011

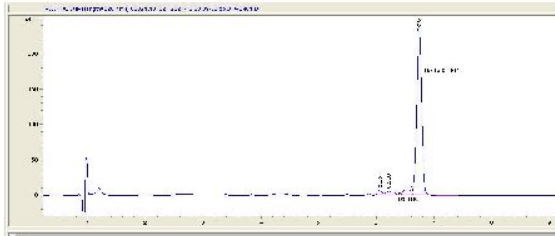
D8- THC Ice Cream Cake Vape

Sample Submitted: 10-20-2021; Report Date: 10-21-2021

D8- THC Ice Cream Cake Vape

Distillate

Chromatogram



Cannabinoid Profile



Cannabinoid Profile by HPLC

0.29%
 Calculated THC Yield

0.00%
 Calculated CBD Yield

92.87%
 Total Cannabinoids

Cannabinoid	% wt	mg/g
Delta-8-THC	92.58	925.8
THC	0.29	2.9
Total Cannabinoids	92.87	928.7
Calculated THC Yield	0.29	2.90
Calculated CBD Yield	0.00	0.00

Calculated Maximum THC Yield = $THC + 0.877 * THCA$
 Calculated Maximum CBD Yield = $CBD + 0.877 * CBDA$

Marin Analytics, LLC

250 Bel Marin Keys Blvd, Suite D4
 Novato, CA 94949

415-936-6477 / sarabiancalana1@gmail.com

Sara Biancalana
 Sara Biancalana
 Chief Scientist

This sample has been tested by Marin Analytics, LLC using valid testing methodologies and a quality system. Values reported relate only to the sample tested. Marin Analytics, LLC makes no claims as to the efficacy, safety or other risks associated with any detected or non-detected levels of any compounds reported herein. This Certificate shall not be reproduced except in full, without the written approval of Marin Analytics, LLC.



Customer: Herbal Pharm RX
Address: 5740 Logan St.
 Denver, CO 80218
Sample ID: DB-THC Super Lemon Haze Vape
Matrix: Concentrates
Labnumber: 21J0041-12

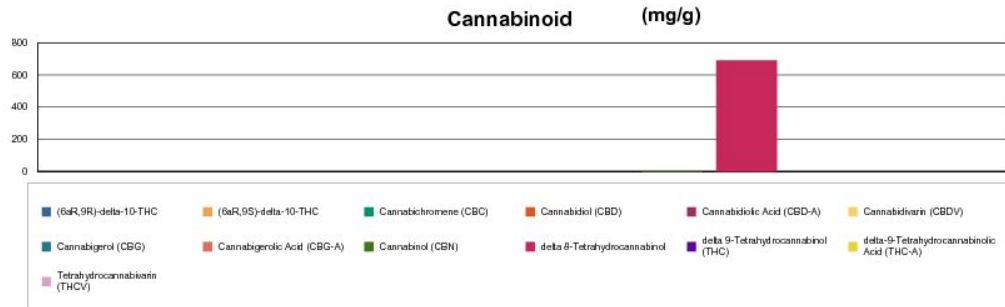
Cannabinoid Profile

Test Conditions: 20°C
Extraction Technician: SH
Analytical Chemist: SH

Extraction Date(s)	Analysis Date(s)
10/5/2021	10/8/2021

Cannabinoids (HPLC)	Results		
	LOD (mg/g)	%	mg/g
Cannabidiol (CBD)	<0.40		
Cannabidiol Acid (CBD-A)	<0.40		
Cannabigerolic Acid (CBG-A)	<0.40		
Cannabigerol (CBG)	<0.40		
Cannabidiol (CBD)	<0.40		
Tetrahydrocannabinol (THCV)	<0.40		
Cannabinol (CBN)		0.25	2.52
Cannabichromene (CBC)	<0.40		
delta-9-Tetrahydrocannabinol (THC)	<0.40		
delta-9-Tetrahydrocannabinolic Acid (THC-A)	<0.80		
delta-8-Tetrahydrocannabinol		69.13	691
(8aR,9S)-delta-10-THC	<0.80		
(8aR,9R)-delta-10-THC	<0.80		
Cannabinoids Total		%	mg/g
Max Active THC (delta-9-tetrahydrocannabinol)		0.00	0.00
Max Active CBD		0.00	0.00
T.Active Cannabinoids		0.25	2.52
Total Cannabinoids		69.40	694.00

Following USDA guidelines on uncertainty, Altitude Consulting's uncertainty is calculated to be +/- 2% for all cannabinoids using a coverage factor of 2 (95% confidence interval). Measurement uncertainty has not been factored into reported values. Blank results indicate the compound was below the limit of detection.



Gary Brook - Laboratory Director - 10/6/2021

Reporting Limits will vary based on sample extraction weight used for the analysis. The results of this report are based solely on the sample submitted and cannot be reproduced. Decision Rule: Measurement uncertainty is not accounted for in the reported values. Results are based solely on calculated numbers. Altitude Consulting makes no Statements of conformity. Pesticide, metal, and microbial analysis are subcontracted to ISO 17025 laboratories.

3282 S Platte River Drive, Englewood CO 80110 • Ph: 303.380.1882 • Email: contact@AltitudeConsultingllc.com