



Cabo Ella Group

Sample 279-040722-289

Acai Berry HHC Cartridge

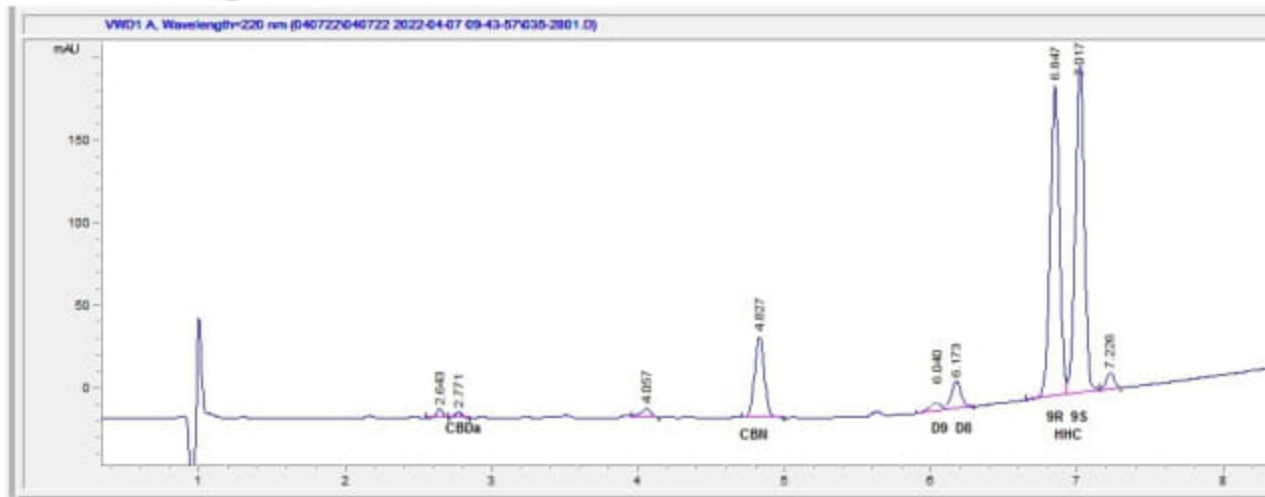
Sample Submitted: 04-07-2022; Report Date: 04-09-2022

nullSample Unit Size: 2.00 g

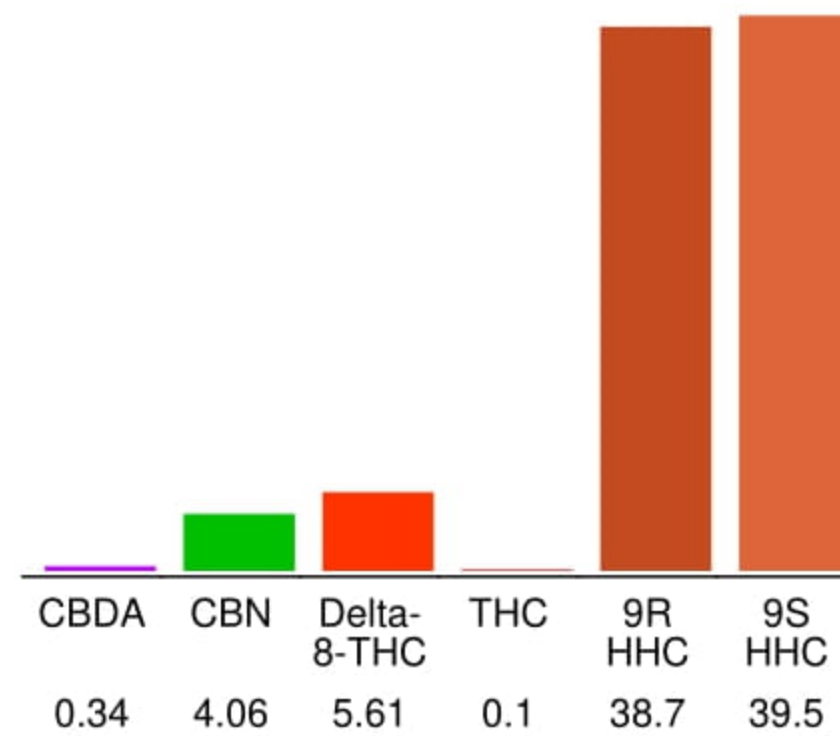
Acai Berry HHC Cartridge

Distillate

Chromatogram



Cannabinoid Profile



Cannabinoid Profile by HPLC

0.10%
Calculated THC Yield

0.30%
Calculated CBD Yield

88.31%
Total Cannabinoids

Cannabinoid	% wt	mg/unit
CBDA	0.34	6.8
CBN	4.06	81.2
Delta-8-THC	5.61	112.2
THC	0.1	2.0
9R HHC	38.7	774.0
9S HHC	39.5	790.0
Total Cannabinoids	88.31	1766.2
Calculated THC Yield	0.10	2.00
Calculated CBD Yield	0.30	5.96

Calculated Maximum THC Yield = THC + 0.877 * THCA
 Calculated Maximum CBD Yield = CBD + 0.877 * CBDA

Marin Analytics, LLC
250 Bel Marin Keys Blvd, Suite D4
Novato, CA 94949

415-936-6477 / sarabiancalana1@gmail.com

Sara Biancalana
Chief Scientist

This sample has been tested by Marin Analytics, LLC using valid testing methodologies and a quality system. Values reported relate only to the sample tested. Marin Analytics, LLC makes no claims as to the efficacy, safety or other risks associated with any detected or non-detected levels of any compounds reported herein. This Certificate shall not be reproduced except in full, without the written approval of Marin Analytics, LLC.



Cabo Ella Group

Sample 279-040722-290

Washington Apple HHC Cartridge

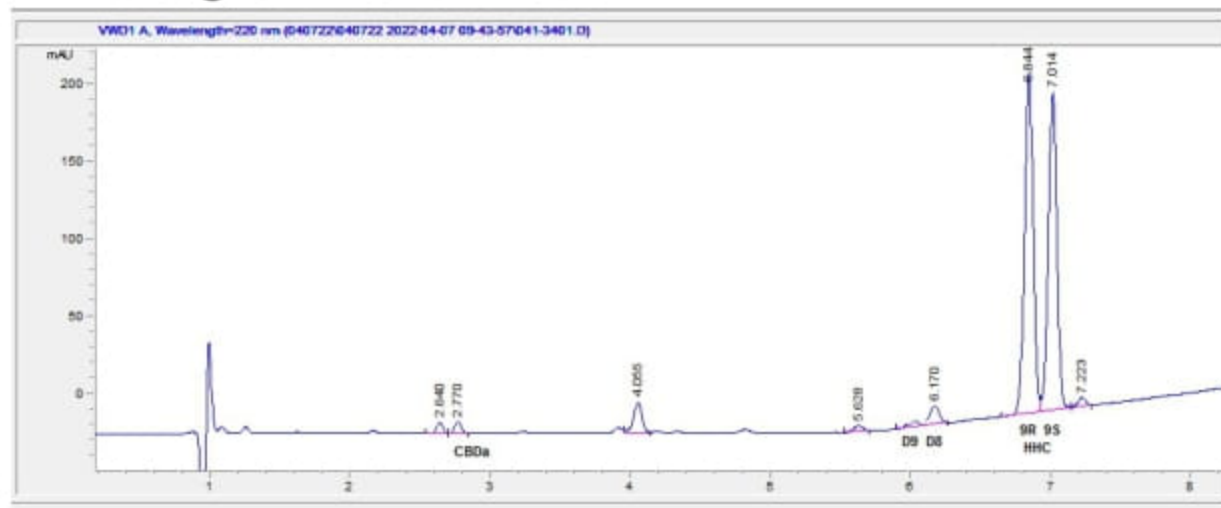
Sample Submitted: 04-07-2022; Report Date: 04-09-2022

nullSample Unit Size: 2.00 g

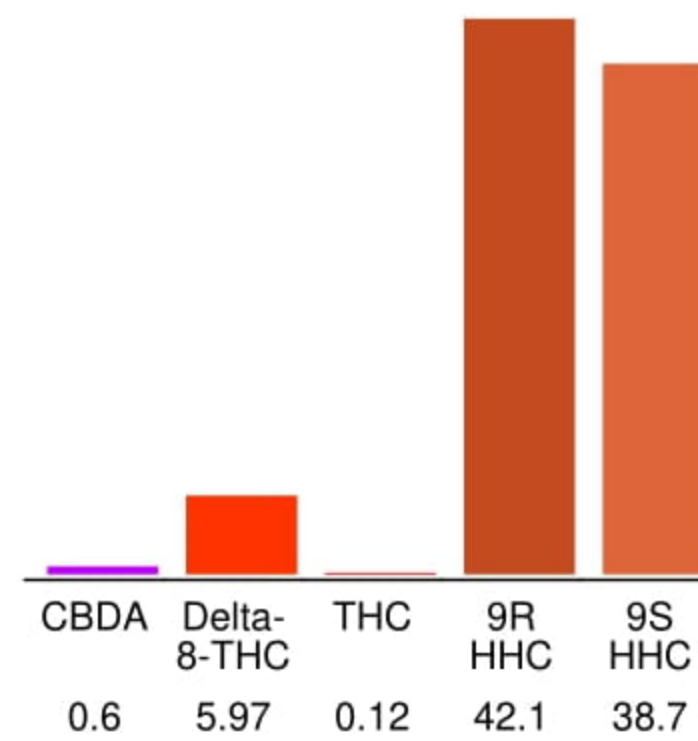
Washington Apple HHC Cartridge

Distillate

Chromatogram



Cannabinoid Profile



Cannabinoid Profile by HPLC

0.12%
Calculated THC Yield

0.53%
Calculated CBD Yield

87.49%
Total Cannabinoids

Cannabinoid	% wt	mg/unit
CBDA	0.6	12.0
Delta-8-THC	5.97	119.4
THC	0.12	2.4
9R HHC	42.1	842.0
9S HHC	38.7	774.0
Total Cannabinoids	87.49	1749.8
Calculated THC Yield	0.12	2.40
Calculated CBD Yield	0.53	10.52

Calculated Maximum THC Yield = THC + 0.877 * THCA
 Calculated Maximum CBD Yield = CBD + 0.877 * CBDA

Marin Analytics, LLC
 250 Bel Marin Keys Blvd, Suite D4
 Novato, CA 94949

415-936-6477 / sarabiancalana1@gmail.com

Sara Biancalana
 Chief Scientist

This sample has been tested by Marin Analytics, LLC using valid testing methodologies and a quality system. Values reported relate only to the sample tested. Marin Analytics, LLC makes no claims as to the efficacy, safety or other risks associated with any detected or non-detected levels of any compounds reported herein. This Certificate shall not be reproduced except in full, without the written approval of Marin Analytics, LLC.



Cabo Ella Group

Sample 279-040722-291

Forbidden Runtz HHC

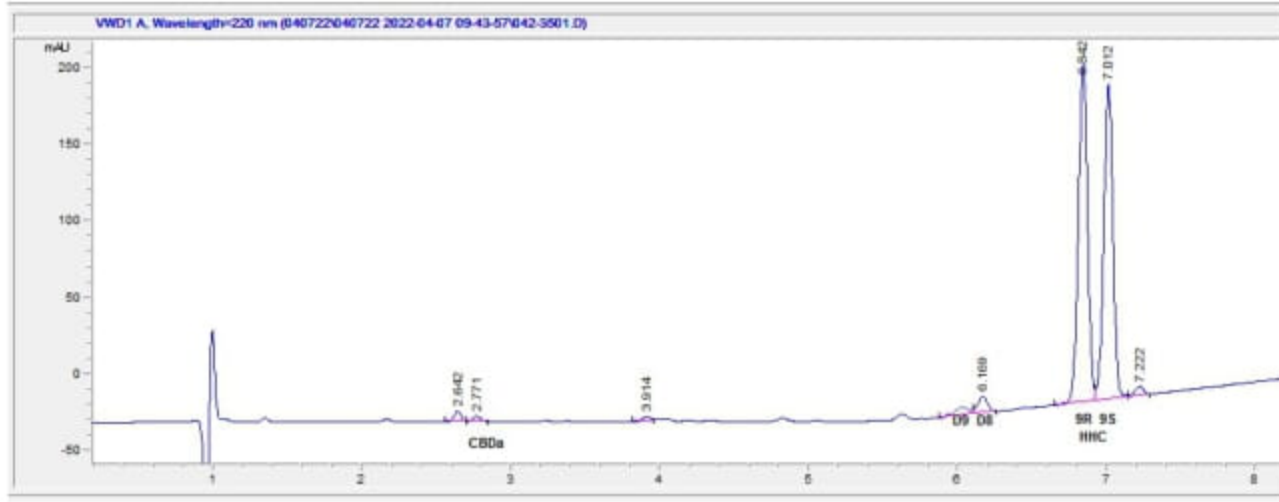
Sample Submitted: 04-07-2022; Report Date: 04-09-2022

nullSample Unit Size: 2.00 g

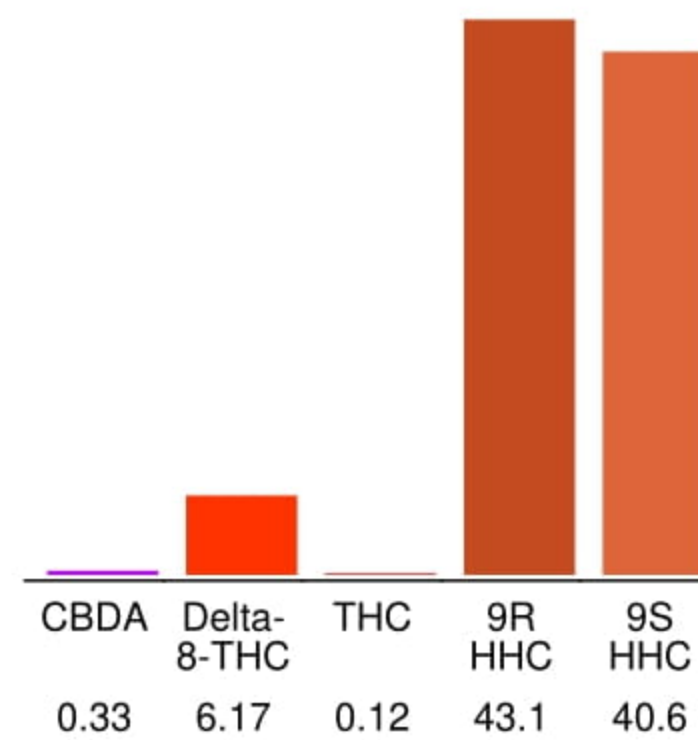
Forbidden Runtz HHC

Distillate

Chromatogram



Cannabinoid Profile



Cannabinoid Profile by HPLC

0.12%
Calculated THC Yield

0.29%
Calculated CBD Yield

90.32%
Total Cannabinoids

Cannabinoid	% wt	mg/unit
CBDA	0.33	6.6
Delta-8-THC	6.17	123.4
THC	0.12	2.4
9R HHC	43.1	862.0
9S HHC	40.6	812.0
Total Cannabinoids	90.32	1806.4
Calculated THC Yield	0.12	2.40
Calculated CBD Yield	0.29	5.79

Calculated Maximum THC Yield = THC + 0.877 * THCA
 Calculated Maximum CBD Yield = CBD + 0.877 * CBDA

Marin Analytics, LLC
 250 Bel Marin Keys Blvd, Suite D4
 Novato, CA 94949

415-936-6477 / sarabiancalana1@gmail.com

Sara Biancalana
 Chief Scientist

This sample has been tested by Marin Analytics, LLC using valid testing methodologies and a quality system. Values reported relate only to the sample tested. Marin Analytics, LLC makes no claims as to the efficacy, safety or other risks associated with any detected or non-detected levels of any compounds reported herein. This Certificate shall not be reproduced except in full, without the written approval of Marin Analytics, LLC.